

Anti-ATP5F1A Antibody (R3G80)

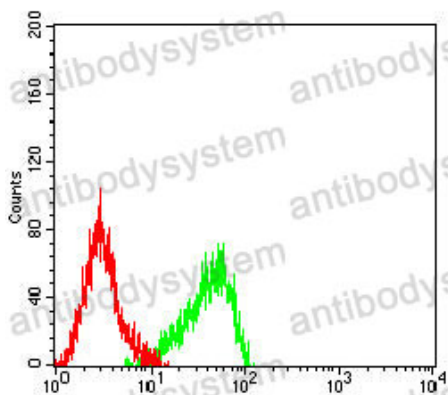
Summary

Catalog No.	RHD67603
Clone ID	R3G80
Host species	Mouse
Tested applications	ELISA: 1:10000, FCM: 1:200-1:400, IHC: 1:200-1:1000, WB: 1:500-1:2000
Species reactivity	Human, Mouse, Rat, Monkey
Form	Liquid
Storage buffer	0.01M PBS, pH 7.4, 0.05% Sodium Azide.
Concentration	1 mg/ml
Purity	>95% as determined by SDS-PAGE.
Clonality	Monoclonal
Isotype	IgG1
Applications	ELISA, FCM, IHC, WB
Target	ATP synthase F1 subunit alpha, ATP5AL2, ATP synthase subunit alpha, mitochondrial, ATPM, ATP5F1A, ATP5A, ATP5A1
Purification	Protein A/G purified from cell culture supernatant.
Endotoxin level	Please contact with the lab for this information.
Accession	P25705
Stability and Storage	Use a manual defrost freezer and avoid repeated freeze-thaw cycles. Store at 4°C short term (1-2 weeks). Store at -20°C 12 months. Store at -80°C long term.

Note

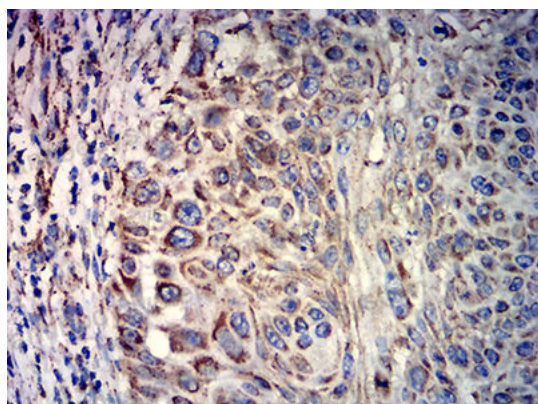
For research use only.

Data Image



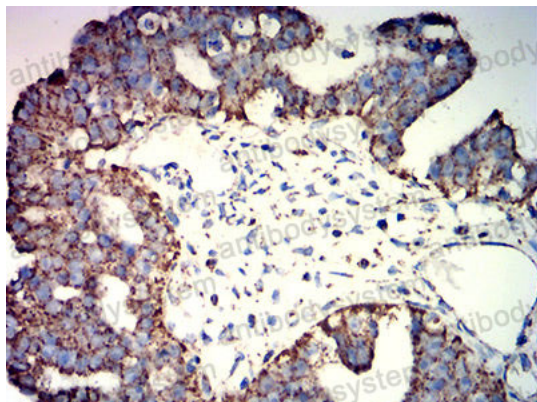
Flow Cytometry

Flow cytometric analysis of Jurkat cells using ATP5F1A mouse mAb (green) and negative control (red).



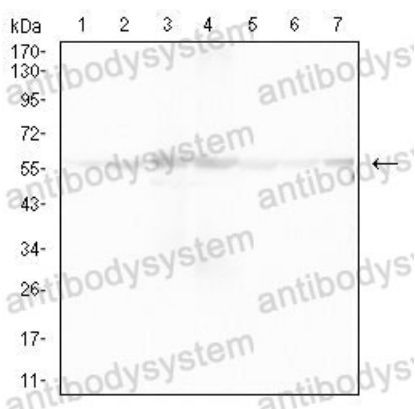
Immunohistochemical

Immunohistochemical analysis of paraffin-embedded human lung cancer tissues using ATP5F1A mouse mAb with DAB staining.



Immunohistochemical

Immunohistochemical analysis of paraffin-embedded human ovarian cancer tissues using ATP5F1A mouse mAb with DAB staining.



Western blot

Western blot analysis using ATP5F1A mouse mAb against COS7 (1), NIH/3T3 (2), mouse heart (3), rat heart (4), HCT116 (5), Hela (6), and HepG2 (7) cell lysate.