

Anti-MCM3 Antibody (R3G73)

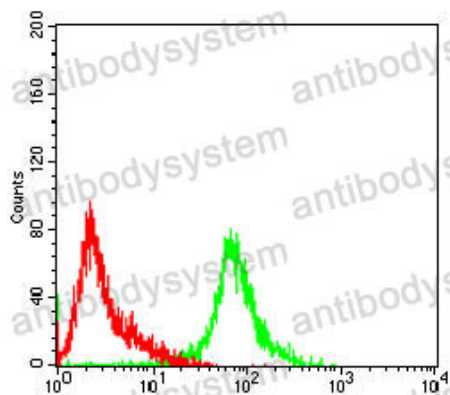
Summary

Catalog No.	RHD66502
Clone ID	R3G73
Host species	Mouse
Tested applications	FCM: 1:200-1:400, IF: 1:50-1:200, IHC: 1:200-1:1000, WB: 1:500-1:2000
Species reactivity	Human, Rat, Monkey
Form	Liquid
Storage buffer	0.01M PBS, pH 7.4, 0.05% Sodium Azide.
Concentration	1 mg/ml
Purity	>95% as determined by SDS-PAGE.
Clonality	Monoclonal
Isotype	IgG1
Applications	FCM, IF, IHC, WB
Target	p102, MCM3, DNA replication licensing factor MCM3, RLF subunit beta, DNA polymerase alpha holoenzyme-associated protein P1, P1-MCM3
Purification	Protein A/G purified from cell culture supernatant.
Endotoxin level	Please contact with the lab for this information.
Accession	P25205
Stability and Storage	Use a manual defrost freezer and avoid repeated freeze-thaw cycles. Store at 4°C short term (1-2 weeks). Store at -20°C 12 months. Store at -80°C long term.

Note

For research use only.

Data Image



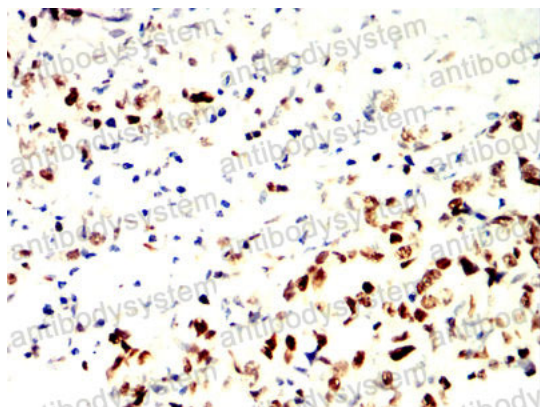
Flow Cytometry

Flow cytometric analysis of Hela cells using MCM3 mouse mAb (green) and negative control (red).



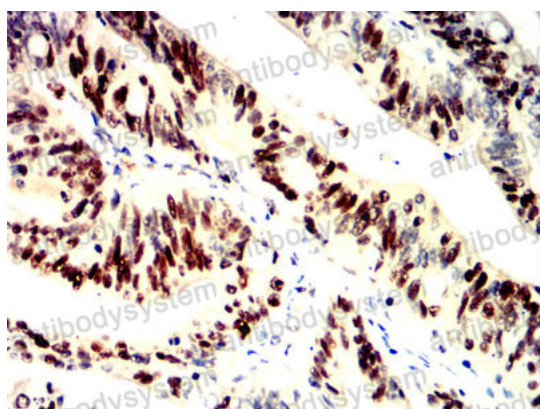
Immunofluorescence

Immunofluorescence analysis of Hela cells using MCM3 mouse mAb (green). Blue: DRAQ5 fluorescent DNA dye. Red: Actin filaments have been labeled with Alexa Fluor- 555 phalloidin.



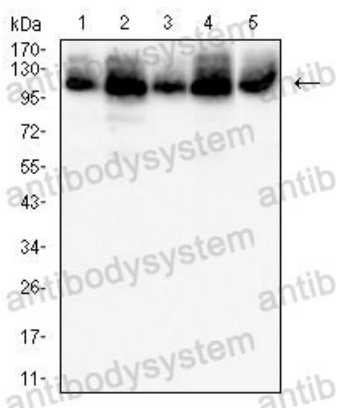
Immunohistochemical

Immunohistochemical analysis of paraffin-embedded human stomach cancer tissues using MCM3 mouse mAb with DAB staining.



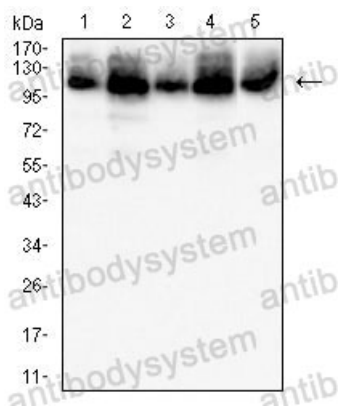
Immunohistochemical

Immunohistochemical analysis of paraffin-embedded human rectum cancer tissues using MCM3 mouse mAb with DAB staining.



Western blot

Western blot analysis using MCM3 mouse mAb against PC-12 (1), HepG2 (2), Hela (3) and COS7 (4) cell lysate.



Western blot

Western blot analysis using MCM3 mouse mAb against PC-12 (1), HepG2 (2), HeLa (3) and COS7 (4) cell lysate.