

# Recombinant Human CD11a/ITGAL Protein, N-His

## Summary

---

|                                   |                                                                                                                                                                                           |
|-----------------------------------|-------------------------------------------------------------------------------------------------------------------------------------------------------------------------------------------|
| <b>Catalog No.</b>                | YHD41001                                                                                                                                                                                  |
| <b>Alternative Names</b>          | CD11A, Leukocyte function-associated molecule 1 alpha chain, Leukocyte adhesion glycoprotein LFA-1 alpha chain, LFA-1A, CD11 antigen-like family member A, CD11a, ITGAL, Integrin alpha-L |
| <b>Form</b>                       | Lyophilized                                                                                                                                                                               |
| <b>Storage buffer</b>             | Lyophilized from a solution in PBS pH 7.4, 0.02% NLS, 1mM EDTA, 4% Trehalose, 1% Mannitol.                                                                                                |
| <b>Purity</b>                     | >90% as determined by SDS-PAGE.                                                                                                                                                           |
| <b>Applications</b>               | ELISA, Immunogen, SDS-PAGE, WB, Bioactivity testing in progress                                                                                                                           |
| <b>Endotoxin level</b>            | Please contact with the lab for this information.                                                                                                                                         |
| <b>Expression system</b>          | E. coli                                                                                                                                                                                   |
| <b>Accession</b>                  | P20701                                                                                                                                                                                    |
| <b>Protein length</b>             | Asn809-His1066                                                                                                                                                                            |
| <b>Nature</b>                     | Recombinant                                                                                                                                                                               |
| <b>Predicted molecular weight</b> | 31.16 kDa                                                                                                                                                                                 |
| <b>Stability and Storage</b>      | Use a manual defrost freezer and avoid repeated freeze thaw cycles. Store at 2 to 8°C for frequent use. Store at -20 to -80°C for twelve months from the date of receipt.                 |
| <b>Reconstitution</b>             | Reconstitute in sterile water for a stock solution.                                                                                                                                       |
| <b>Species</b>                    | Homo sapiens (Human)                                                                                                                                                                      |

**Shipping**

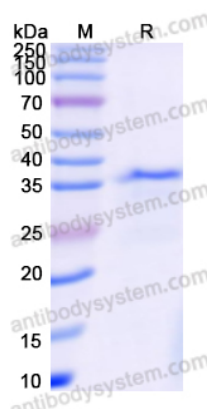
In general, proteins are provided as lyophilized powder/frozen liquid. They are shipped out with dry ice/blue ice unless customers require otherwise.

**Note**

For research use only.

**Data Image**

---



SDS-PAGE

SDS PAGE for recombinant Human CD11a/ITGAL