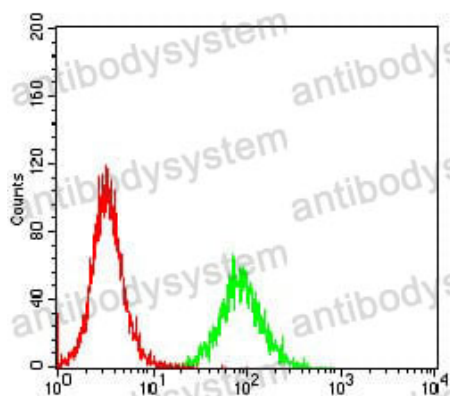


Anti-CCNE1 Antibody (R3G59)

Summary

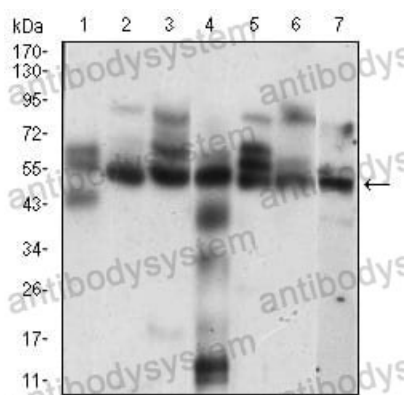
Catalog No.	RHD64403
Clone ID	R3G59
Host species	Mouse
Tested applications	ELISA: 1:10000, FCM: 1:200-1:400, WB: 1:500-1:2000
Species reactivity	Human, Mouse
Form	Liquid
Storage buffer	0.01M PBS, pH 7.4, 0.05% Sodium Azide.
Concentration	1 mg/ml
Purity	>95% as determined by SDS-PAGE.
Clonality	Monoclonal
Isotype	IgG1
Applications	ELISA, FCM, WB
Target	CCNE, G1/S-specific cyclin-E1, CCNE1
Purification	Protein A/G purified from cell culture supernatant.
Endotoxin level	Please contact with the lab for this information.
Accession	P24864
Stability and Storage	Use a manual defrost freezer and avoid repeated freeze-thaw cycles. Store at 4°C short term (1-2 weeks). Store at -20°C 12 months. Store at -80°C long term.
Note	For research use only.

Data Image



Flow Cytometry

Flow cytometric analysis of K652 cells using CCNE1 mouse mAb (green) and negative control (red).



Western blot

Western blot analysis using CCNE1 mouse mAb against Hela (1), K562 (2), NIH/3T3 (3), C6 (4), MCF-7 (5), Jurkat (6), A431 (7) cell lysate.