

Anti-CCND1 Antibody (R3G56)

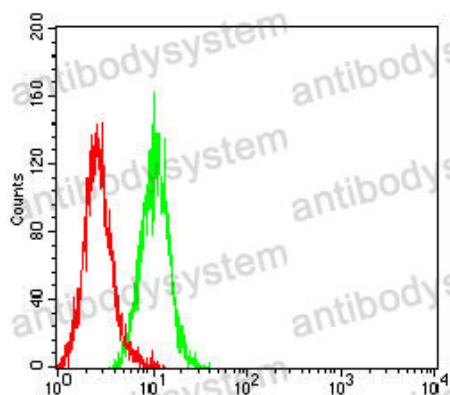
Summary

Catalog No.	RHD62201
Clone ID	R3G56
Host species	Mouse
Tested applications	ELISA: 1:10000, FCM: 1:200-1:400, WB: 1:500-1:2000
Species reactivity	Human, Mouse
Form	Liquid
Storage buffer	0.01M PBS, pH 7.4, 0.05% Sodium Azide.
Concentration	1 mg/ml
Purity	>95% as determined by SDS-PAGE.
Clonality	Monoclonal
Isotype	IgG1
Applications	ELISA, FCM, WB
Target	B-cell lymphoma 1 protein, G1/S-specific cyclin-D1, BCL1, PRAD1, CCND1, PRAD1 oncogene, BCL-1 oncogene, BCL-1
Purification	Protein A/G purified from cell culture supernatant.
Endotoxin level	Please contact with the lab for this information.
Accession	P24385
Stability and Storage	Use a manual defrost freezer and avoid repeated freeze-thaw cycles. Store at 4°C short term (1-2 weeks). Store at -20°C 12 months. Store at -80°C long term.

Note

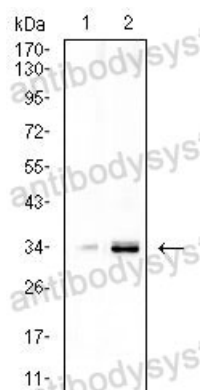
For research use only.

Data Image



Flow Cytometry

Flow cytometric analysis of Hela cells using CCND1 mouse mAb (green) and negative control (red).



Western blot

Western blot analysis using CCND1 mouse mAb against LNCAP (1), and NIH/3T3 (2) cell lysate.