

Anti-CPT2 Antibody (R3G49)

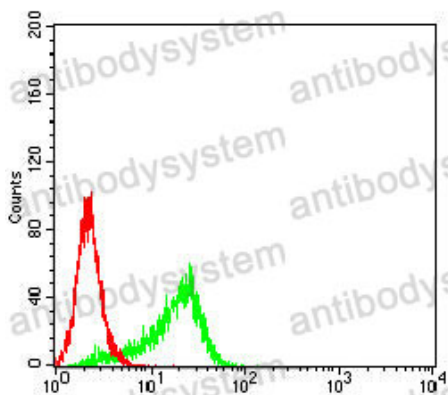
Summary

Catalog No.	RHD60601
Clone ID	R3G49
Host species	Mouse
Tested applications	ELISA: 1:10000, FCM: 1:200-1:400, WB: 1:500-1:2000
Species reactivity	Human, Mouse, Rat
Form	Liquid
Storage buffer	0.01M PBS, pH 7.4, 0.05% Sodium Azide.
Concentration	1 mg/ml
Purity	>95% as determined by SDS-PAGE.
Clonality	Monoclonal
Isotype	IgG2a
Applications	ELISA, FCM, WB
Target	CPT II, Carnitine O-palmitoyltransferase 2, mitochondrial, CPT1, CPT2, Carnitine palmitoyltransferase II
Purification	Protein A/G purified from cell culture supernatant.
Endotoxin level	Please contact with the lab for this information.
Accession	P23786
Stability and Storage	Use a manual defrost freezer and avoid repeated freeze-thaw cycles. Store at 4°C short term (1-2 weeks). Store at -20°C 12 months. Store at -80°C long term.

Note

For research use only.

Data Image



Flow Cytometry

Flow cytometric analysis of Hela cells using CPT2 mouse mAb (green) and negative control (red).



Western blot

Western blot analysis using CPT2 mouse mAb against MCF-7 (1), Hela (2), NIH/3T3 (3) and PC-12 (4) cell lysate.