

Anti-S6K1/RPS6KB1 Antibody (R3G33)

Summary

Catalog No.	RHD57804
Clone ID	R3G33
Host species	Mouse
Tested applications	IHC: 1:50-1:100
Species reactivity	Human, Mouse, Rat
Form	Liquid
Storage buffer	0.01M PBS, pH 7.4, 0.5% BSA, 0.05% Sodium Azide and 50% Glycerol.
Concentration	1 mg/ml
Purity	>95% as determined by SDS-PAGE.
Clonality	Monoclonal
Isotype	IgG1
Applications	IHC
Target	S6K-beta-1, 70 kDa ribosomal protein S6 kinase 1, p70 S6KA, p70-S6K 1, S6K1, Serine/threonine-protein kinase 14A, p70 ribosomal S6 kinase alpha, p70 S6 kinase alpha, STK14A, RPS6KB1, Ribosomal protein S6 kinase I, p70 S6K-alpha, P70S6K1, Ribosomal protein S6 kinase beta-1
Purification	Protein A/G purified from cell culture supernatant.
Endotoxin level	Please contact with the lab for this information.
Accession	P23443

Stability and Storage

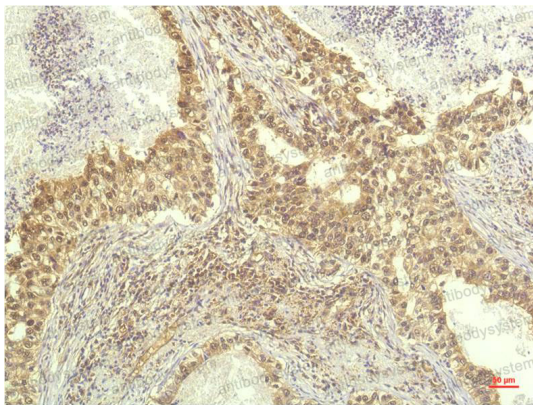
Use a manual defrost freezer and avoid repeated freeze-thaw cycles.

Store at 4°C short term (1-2 weeks). Store at -20°C 12 months. Store at -80°C long term.

Note

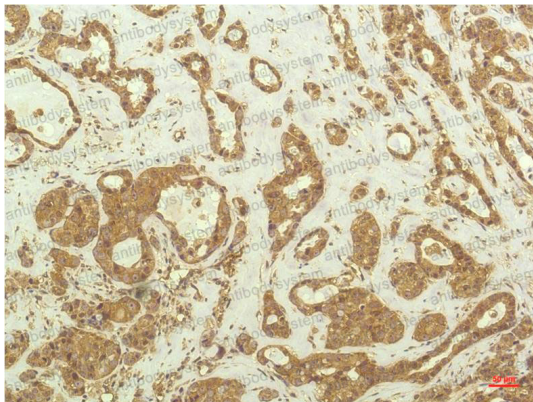
For research use only.

Data Image



Immunohistochemical

Immunohistochemistry analysis of paraffin-embedded Human Lung Carcinoma Tissue using S6K1 antibody. High-pressure and temperature Sodium Citrate pH 6.0 was used for antigen retrieval.



Immunohistochemical

Immunohistochemical analysis of paraffin-embedded Human tonsils using S6K1 antibody. High-pressure and temperature Sodium Citrate pH 6.0 was used for antigen retrieval.