

Anti-S6K1/RPS6KB1 Antibody (R3G32)

Summary

Catalog No.	RHD57803
Clone ID	R3G32
Host species	Mouse
Tested applications	ELISA: 1:10000, FCM: 1:200-1:400, IHC: 1:200-1:1000
Species reactivity	Human
Form	Liquid
Storage buffer	0.01M PBS, pH 7.4, 0.05% Sodium Azide.
Concentration	1 mg/ml
Purity	>95% as determined by SDS-PAGE.
Clonality	Monoclonal
Isotype	IgG1
Applications	ELISA, FCM, IHC
Target	S6K-beta-1, 70 kDa ribosomal protein S6 kinase 1, p70 S6KA, p70-S6K 1, S6K1, Serine/threonine-protein kinase 14A, p70 ribosomal S6 kinase alpha, p70 S6 kinase alpha, STK14A, RPS6KB1, Ribosomal protein S6 kinase I, p70 S6K-alpha, P70S6K1, Ribosomal protein S6 kinase beta-1
Purification	Protein A/G purified from cell culture supernatant.
Endotoxin level	Please contact with the lab for this information.
Accession	P23443

Stability and Storage

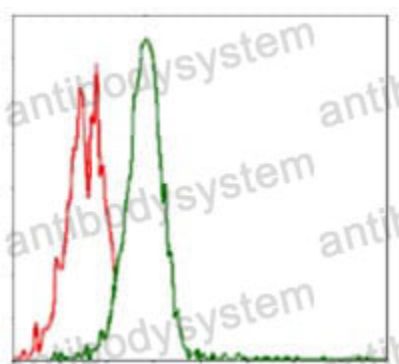
Use a manual defrost freezer and avoid repeated freeze-thaw cycles.

Store at 4°C short term (1-2 weeks). Store at -20°C 12 months. Store at -80°C long term.

Note

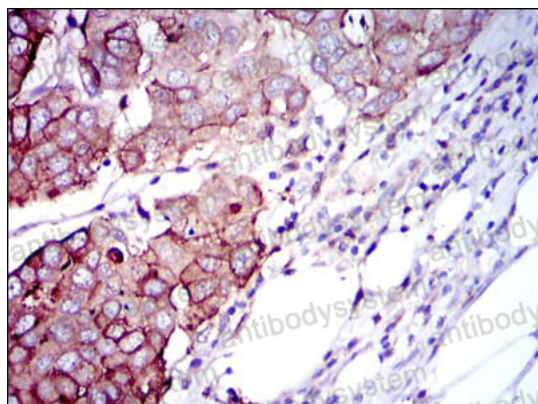
For research use only.

Data Image



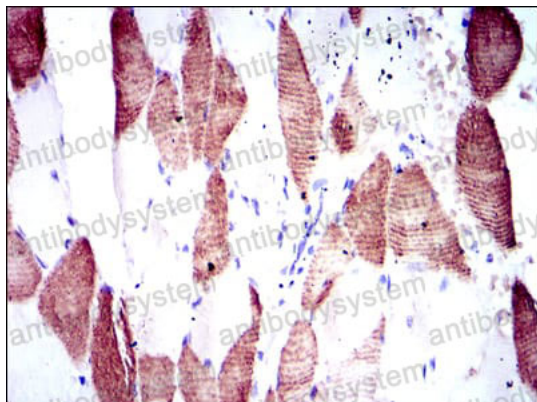
Flow Cytometry

Flow cytometric analysis of Jurkat cells using RPS6KB1 mouse mAb (green) and negative control (red).



Immunohistochemical

Immunohistochemical analysis of paraffin-embedded human breast cancer tissues using RPS6KB1 mouse mAb with DAB staining.



Immunohistochemical

Immunohistochemical analysis of paraffin-embedded human muscle tissues using RPS6KB1 mouse mAb with DAB staining.