

Anti-S100A1 Antibody (R3G31)

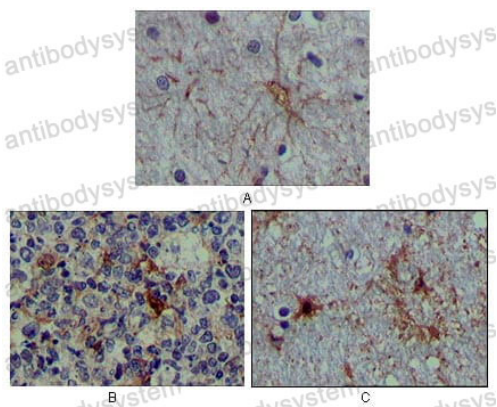
Summary

Catalog No.	RHD56601
Clone ID	R3G31
Host species	Mouse
Tested applications	IHC: 1:200-1:1000
Species reactivity	Human
Form	Liquid
Storage buffer	0.01M PBS, pH 7.4, 0.05% Sodium Azide.
Concentration	1 mg/ml
Purity	>95% as determined by SDS-PAGE.
Clonality	Monoclonal
Isotype	IgG1
Applications	IHC
Target	S100A1, Protein S100-A1, S-100 protein alpha chain, S100 calcium-binding protein A1, S100A, S-100 protein subunit alpha
Purification	Protein A/G purified from cell culture supernatant.
Endotoxin level	Please contact with the lab for this information.
Accession	P23297
Stability and Storage	Use a manual defrost freezer and avoid repeated freeze-thaw cycles. Store at 4°C short term (1-2 weeks). Store at -20°C 12 months. Store at -80°C long term.

Note

For research use only.

Data Image



Immunohistochemical

Immunohistochemical analysis of paraffin-embedded human brain tissue (A), lymphoid follicles tissue (B) and interbrain tissue (C), showing cytoplasmic localization using S100A mouse mAb with DAB staining.