

Anti-PPIB Antibody (R3G30)

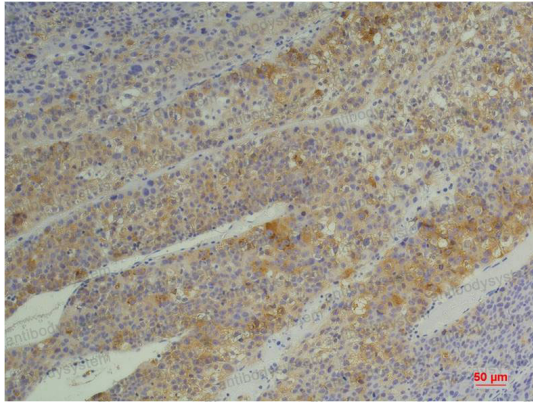
Summary

Catalog No.	RHD56504
Clone ID	R3G30
Host species	Mouse
Tested applications	IHC: 1:50-1:100, WB: 1:500-1:1000
Species reactivity	Human, Mouse, Rat
Form	Liquid
Storage buffer	0.01M PBS, pH 7.4, 0.5% BSA, 0.05% Sodium Azide and 50% Glycerol.
Concentration	1 mg/ml
Purity	>95% as determined by SDS-PAGE.
Clonality	Monoclonal
Isotype	IgG1
Applications	IHC, WB
Target	Cyclophilin B, S-cyclophilin, Rotamase B, PPIase B, CYP-S1, Peptidyl-prolyl cis-trans isomerase B, PPIB, SCYLP, CYPB
Purification	Protein A/G purified from cell culture supernatant.
Endotoxin level	Please contact with the lab for this information.
Accession	P23284
Stability and Storage	Use a manual defrost freezer and avoid repeated freeze-thaw cycles. Store at 4°C short term (1-2 weeks). Store at -20°C 12 months. Store at -80°C long term.

Note

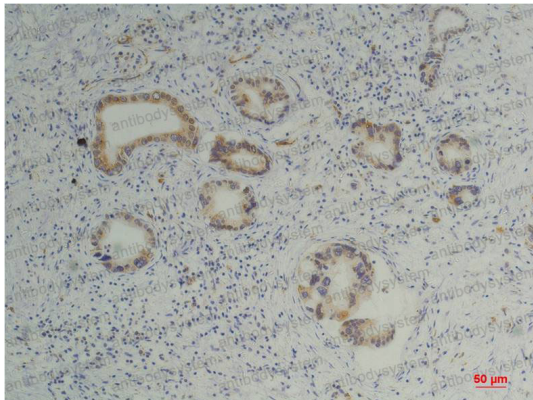
For research use only.

Data Image



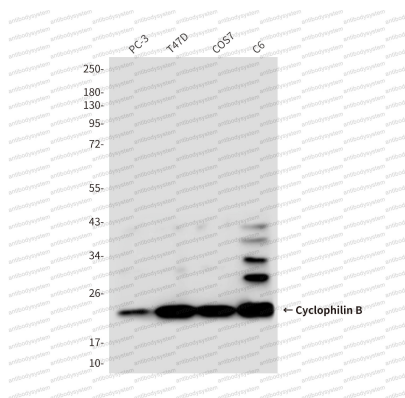
Immunohistochemical

Immunohistochemistry analysis of paraffin-embedded Human Hepatocarcinoma using Cyclophilin B antibody. High-pressure and temperature Sodium Citrate pH 6.0 was used for antigen retrieval.



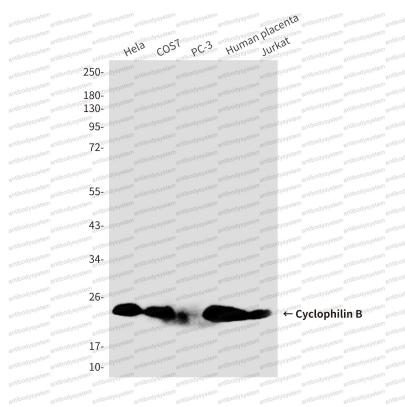
Immunohistochemical

Immunohistochemical analysis of paraffin-embedded Human tonsils using Cyclophilin B antibody. High-pressure and temperature Sodium Citrate pH 6.0 was used for antigen retrieval.



Western blot

Western blot analysis of Cyclophilin B in PC-3, T47D, COS7, C6 lysates using Cyclophilin B antibody



Western blot

Western blot analysis of Cyclophilin B in HeLa, COS7, PC-3, Human placenta, Jurkat lysates using Cyclophilin B antibody.