

Anti-CD206/MRC1 Antibody (R3G25)

Summary

Catalog No.	RHD55204
Clone ID	R3G25
Host species	Mouse
Tested applications	FCM: 1:200-1:400, IHC: 1:200-1:1000
Species reactivity	Human
Form	Liquid
Storage buffer	0.01M PBS, pH 7.4, 0.05% Sodium Azide.
Concentration	1 mg/ml
Purity	>95% as determined by SDS-PAGE.
Clonality	Monoclonal
Isotype	IgG2a
Applications	FCM, IHC
Target	Human mannose receptor, MRC1, MMR, Macrophage mannose receptor 1, CD206, hMR, C-type lectin domain family 13 member D-like, CLEC13DL, MRC1L1, CLEC13D, C-type lectin domain family 13 member D, Macrophage mannose receptor 1-like protein 1
Purification	Protein A/G purified from cell culture supernatant.
Endotoxin level	Please contact with the lab for this information.
Accession	P22897

Stability and Storage

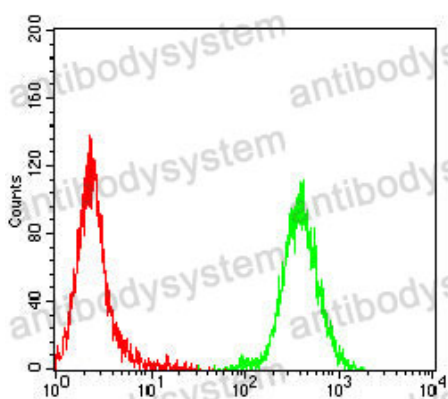
Use a manual defrost freezer and avoid repeated freeze-thaw cycles.

Store at 4°C short term (1-2 weeks). Store at -20°C 12 months. Store at -80°C long term.

Note

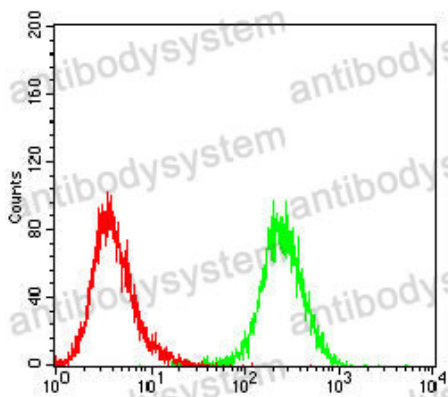
For research use only.

Data Image



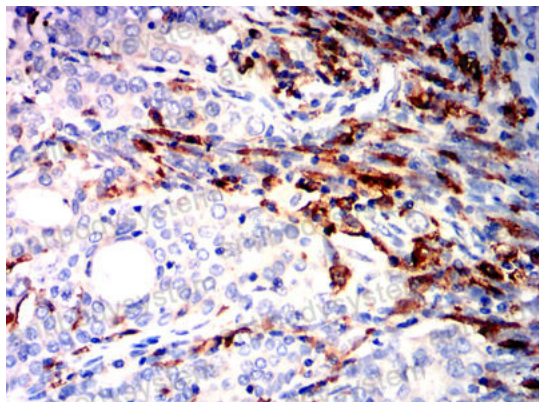
Flow Cytometry

Flow cytometric analysis of MOLT4 cells using CD206 mouse mAb (green) and negative control (red).



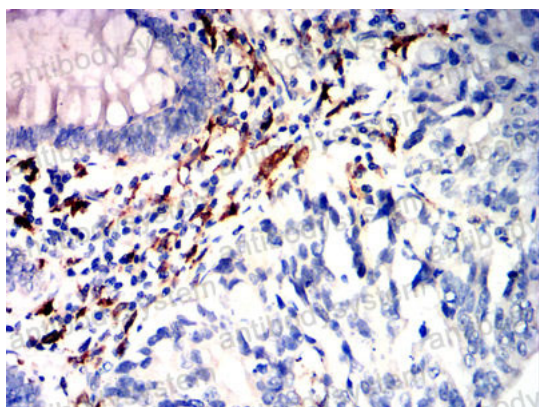
Flow Cytometry

Flow cytometric analysis of U937 cells using CD206 mouse mAb (green) and negative control (red).



Immunohistochemical

Immunohistochemical analysis of paraffin-embedded human cervical cancer tissues using CD206 mouse mAb with DAB staining.



Immunohistochemical

Immunohistochemical analysis of paraffin-embedded human rectal cancer tissues using CD206 mouse mAb with DAB staining.