

Anti-LHCGR Antibody (R3G22)

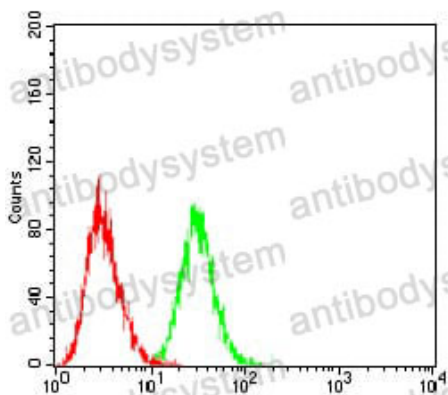
Summary

Catalog No.	RHD54902
Clone ID	R3G22
Host species	Mouse
Tested applications	ELISA: 1:10000, FCM: 1:200-1:400, IF: 1:200-1:1000, WB: 1:500-1:2000
Species reactivity	Human
Form	Liquid
Storage buffer	0.01M PBS, pH 7.4, 0.05% Sodium Azide.
Concentration	1 mg/ml
Purity	>95% as determined by SDS-PAGE.
Clonality	Monoclonal
Isotype	IgG1
Applications	ELISA, FCM, IF, WB
Target	LHR, LH/CG-R, Lutropin-choriogonadotropic hormone receptor, LCGR, Luteinizing hormone receptor, LGR2, LHCGR, LSH-R, LHRHR
Purification	Protein A/G purified from cell culture supernatant.
Endotoxin level	Please contact with the lab for this information.
Accession	P22888
Stability and Storage	Use a manual defrost freezer and avoid repeated freeze-thaw cycles. Store at 4°C short term (1-2 weeks). Store at -20°C 12 months. Store at -80°C long term.

Note

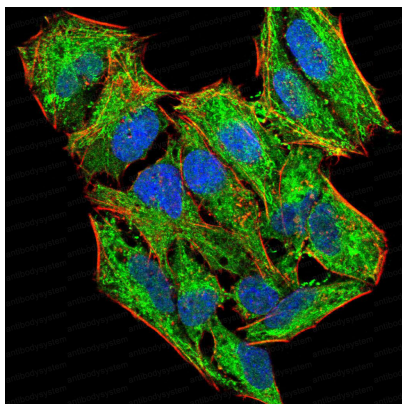
For research use only.

Data Image



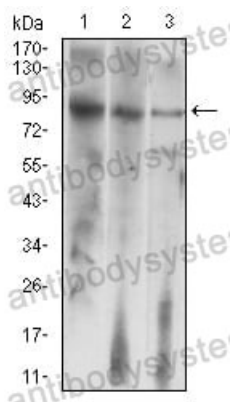
Flow Cytometry

Flow cytometric analysis of Jurkat cells using LHCGR mouse mAb (green) and negative control (red).



Immunofluorescence

Immunofluorescence analysis of Hela cells using LHR-29 mouse mAb (green). Blue: DRAQ5 fluorescent DNA dye. Red: Actin filaments have been labeled with Alexa Fluor-555 phalloidin.



Western blot

Western blot analysis using LHCGR mouse mAb against HepG2 (1), Jurkat (2), and SMMC-7721 (3) cell lysate.