

Anti-CBL Antibody (R3G21)

Summary

Catalog No.	RHD53604
Clone ID	R3G21
Host species	Mouse
Tested applications	ELISA: 1:10000, FCM: 1:200-1:400, IF: 1:50-1:500, IHC: 1:100-1:500, WB: 1:500-1:2000
Species reactivity	Human, Mouse, Rat, Rabbit, Monkey
Form	Liquid
Storage buffer	0.01M PBS, pH 7.4, 0.05% Sodium Azide.
Concentration	1 mg/ml
Purity	>95% as determined by SDS-PAGE.
Clonality	Monoclonal
Isotype	IgG1
Applications	ELISA, FCM, IF, IHC, WB
Target	CBL, RING finger protein 55, Proto-oncogene c-Cbl, CBL2, E3 ubiquitin-protein ligase CBL, RING-type E3 ubiquitin transferase CBL, Casitas B-lineage lymphoma proto-oncogene, Signal transduction protein CBL, RNF55
Purification	Protein A/G purified from cell culture supernatant.
Endotoxin level	Please contact with the lab for this information.
Accession	P22681

Recombinant Proteins & Antibodies

Stability and Storage

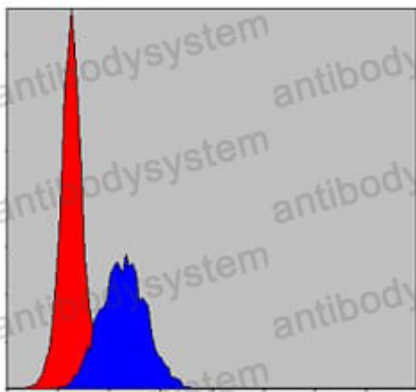
Use a manual defrost freezer and avoid repeated freeze-thaw cycles.

Store at 4°C short term (1-2 weeks). Store at -20°C 12 months. Store at -80°C long term.

Note

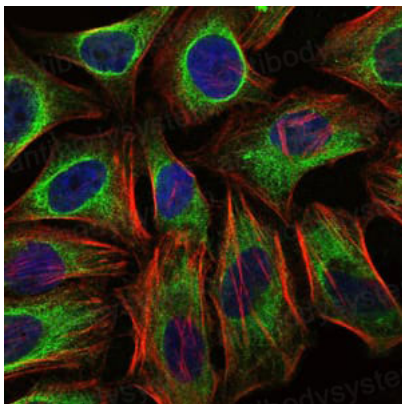
For research use only.

Data Image



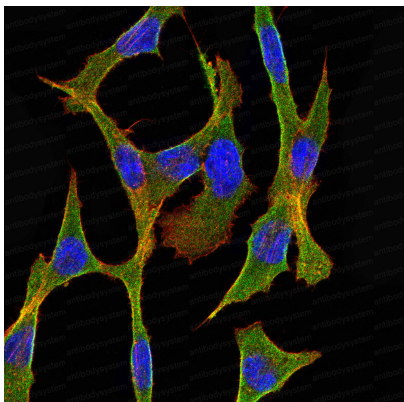
Flow Cytometry

Flow cytometric analysis of MCF-7 cells using C-CBL mouse mAb (blue) and negative control (red).



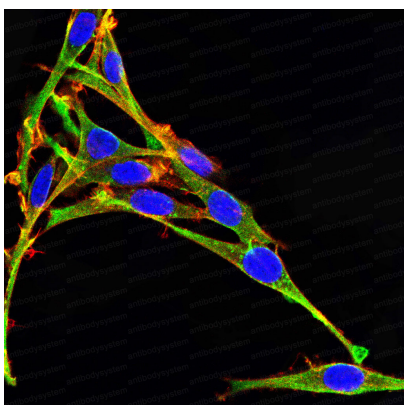
Immunofluorescence

Immunofluorescence analysis of HeLa cells using C-CBL mouse mAb (green). Blue: DRAQ5 fluorescent DNA dye. Red: Actin filaments have been labeled with Alexa Fluor-555 phalloidin.



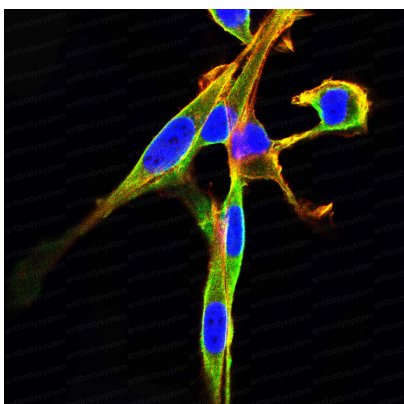
Immunofluorescence

Immunofluorescence analysis of COS7 cells using C-CBL mouse mAb (green). Blue: DRAQ5 fluorescent DNA dye. Red: Actin filaments have been labeled with Alexa Fluor-555 phalloidin.



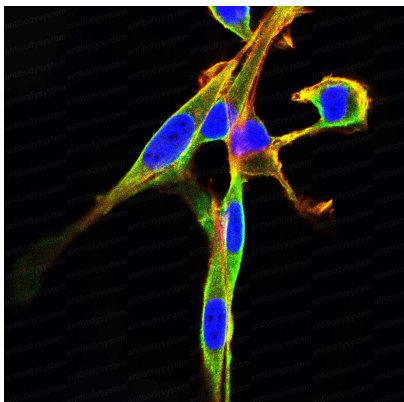
Immunofluorescence

Immunofluorescence analysis of PC-12 cells using C-CBL mouse mAb (green). Blue: DRAQ5 fluorescent DNA dye. Red: Actin filaments have been labeled with Alexa Fluor-555 phalloidin.



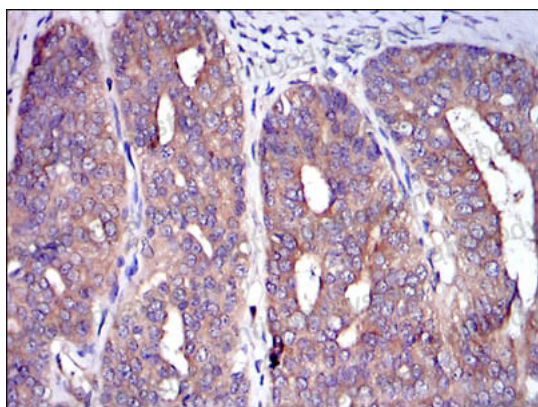
Immunofluorescence

Immunofluorescence analysis of NIH/3T3 cells using C-CBL mouse mAb (green). Blue: DRAQ5 fluorescent DNA dye. Red: Actin filaments have been labeled with Alexa Fluor-555 phalloidin.



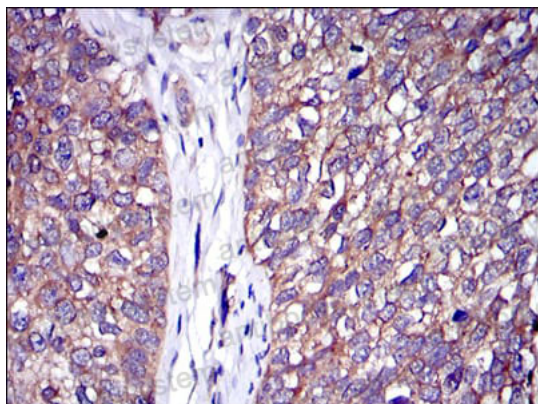
Immunofluorescence

Immunofluorescence analysis of NIH/3T3 cells using C-CBL mouse mAb (green). Blue: DRAQ5 fluorescent DNA dye. Red: Actin filaments have been labeled with Alexa Fluor- 555 phalloidin.



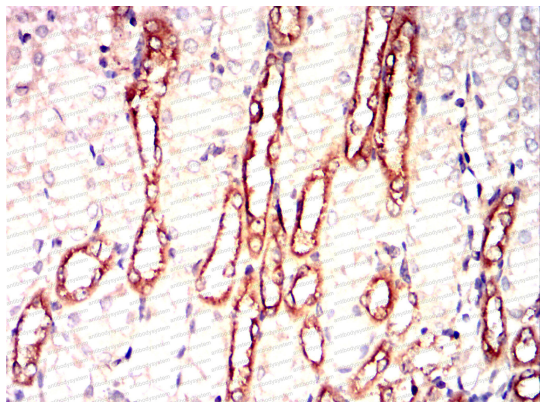
Immunohistochemical

Immunohistochemical analysis of paraffin-embedded human ovarian cancer tissues using C-CBL mouse mAb with DAB staining.



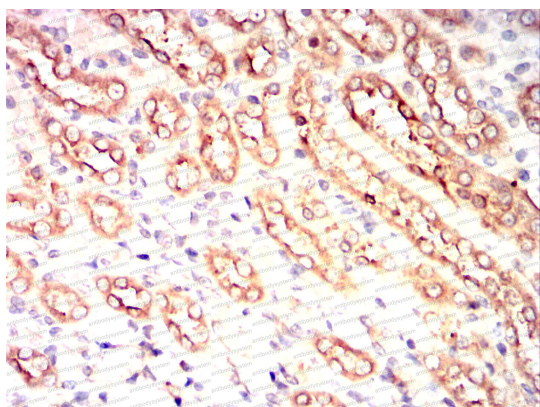
Immunohistochemical

Immunohistochemical analysis of paraffin-embedded human bladder cancer tissues using C-CBL mouse mAb with DAB staining.



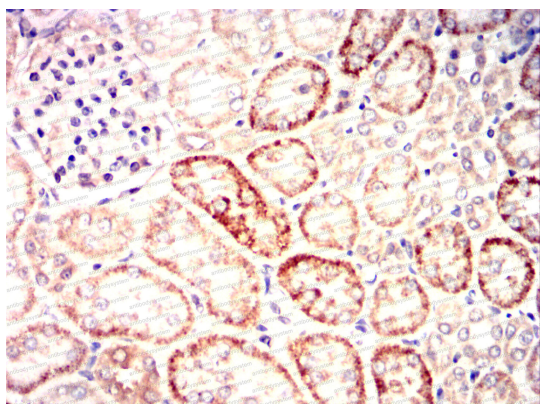
Immunohistochemical

Immunohistochemical analysis of paraffin-embedded Mouse kidney using C-CBL mouse mAb with DAB staining.



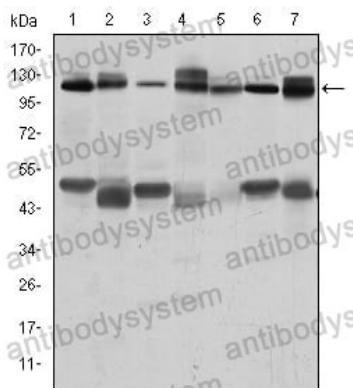
Immunohistochemical

Immunohistochemical analysis of paraffin-embedded Rat kidney using C-CBL mouse mAb with DAB staining.



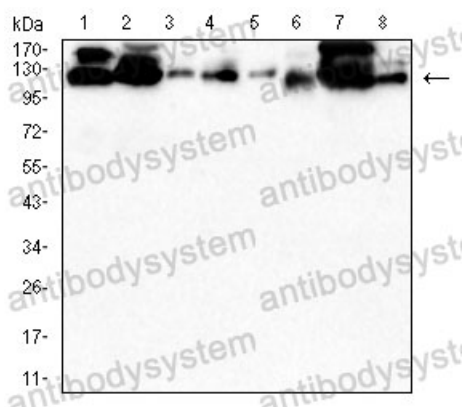
Immunohistochemical

Immunohistochemical analysis of paraffin-embedded Rabbit kidney using C-CBL mouse mAb with DAB staining.



Western blot

Western blot analysis using C-CBL mouse mAb against RAJI (1), RAW264.7 (2), K562 (3), SKBR-3 (4), 3T3-L1 (5), THP-1 (6) and PC-12 (7) cell lysate.



Western blot

Western blot analysis using C-CBL mouse mAb against PC-12(1)Raw264.7(2)NIH/3T3(3)NRK(4)C2C12(5)C6(6)F9(7)COS-7(8) cell lysate.