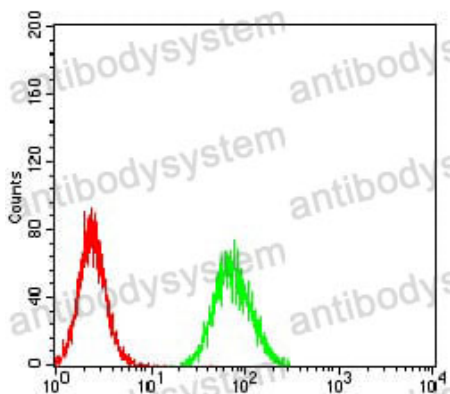


Anti-Calretinin/CALB2 Antibody (R3G20)

Summary

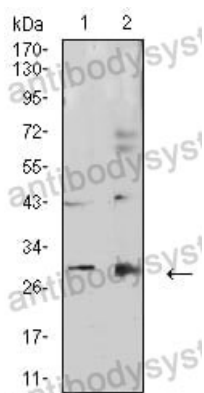
Catalog No.	RHD53407
Clone ID	R3G20
Host species	Mouse
Tested applications	ELISA: 1:10000, FCM: 1:200-1:400, WB: 1:500-1:2000
Species reactivity	Human, Monkey
Form	Liquid
Storage buffer	0.01M PBS, pH 7.4, 0.05% Sodium Azide.
Concentration	1 mg/ml
Purity	>95% as determined by SDS-PAGE.
Clonality	Monoclonal
Isotype	IgG1
Applications	ELISA, FCM, WB
Target	Calretinin, CR, 29 kDa calbindin, CALB2, CAB29
Purification	Protein A/G purified from cell culture supernatant.
Endotoxin level	Please contact with the lab for this information.
Accession	P22676
Stability and Storage	Use a manual defrost freezer and avoid repeated freeze-thaw cycles. Store at 4°C short term (1-2 weeks). Store at -20°C 12 months. Store at -80°C long term.
Note	For research use only.

Data Image



Flow Cytometry

Flow cytometric analysis of Hela cells using CALB2 mouse mAb (green) and negative control (red).



Western blot

Western blot analysis using CALB2 mouse mAb against HepG2 (1) and COS7 (2) cell lysate.