

Anti-EPHA1 Antibody (R3F91)

Summary

Catalog No.	RHD47001
Clone ID	R3F91
Host species	Mouse
Tested applications	IHC: 1:200-1:1000, WB: 1:500-1:2000
Species reactivity	Human
Form	Liquid
Storage buffer	0.01M PBS, pH 7.4, 0.05% Sodium Azide.
Concentration	1 mg/ml
Purity	>95% as determined by SDS-PAGE.
Clonality	Monoclonal
Isotype	IgG1
Applications	IHC, WB
Target	Tyrosine-protein kinase receptor EPH, EPHT1, Erythropoietin-producing hepatoma receptor, hEpha1, EPH, EPHA1, Ephrin type-A receptor 1, EPH tyrosine kinase 1, EPH tyrosine kinase, EPHT
Purification	Protein A/G purified from cell culture supernatant.
Endotoxin level	Please contact with the lab for this information.
Accession	P21709

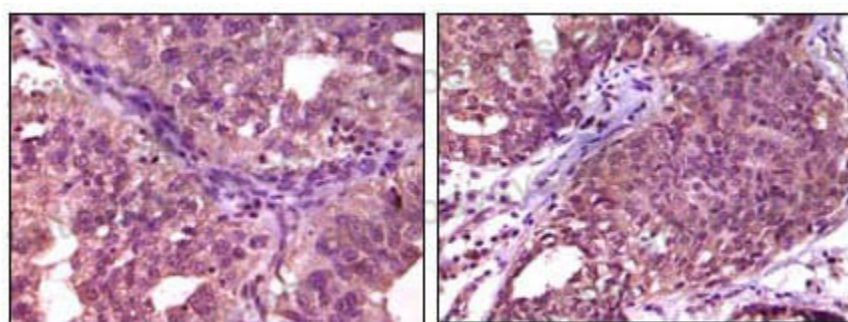
Stability and Storage

Use a manual defrost freezer and avoid repeated freeze-thaw cycles.

Store at 4°C short term (1-2 weeks). Store at -20°C 12 months. Store at -80°C long term.

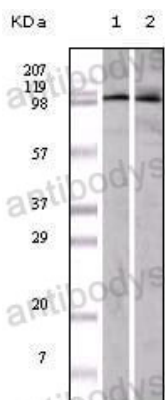
Note

For research use only.

Data Image

Immunohistochemical analysis of paraffin-embedded human ovary carcinoma (left) and breast carcinoma (right), showing cytoplasmic localization using EphA1 mouse mAb with DAB staining.

Immunohistochemical



Western blot analysis using EphA1 mouse mAb against A549 (1) and Hela (2) cell lysate.

Western blot