

Anti-KITLG/SCF Antibody (R3F87)

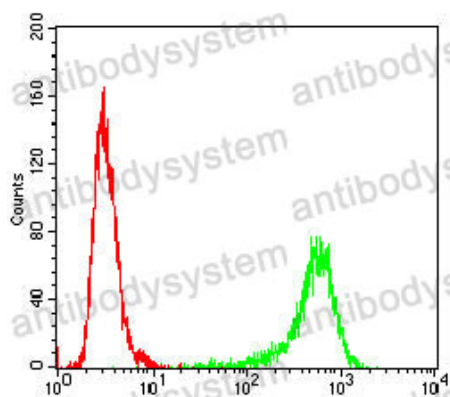
Summary

Catalog No.	RHD46503
Clone ID	R3F87
Host species	Mouse
Tested applications	ELISA: 1:10000, FCM: 1:200-1:400, IF: 1:200-1:1000, IHC: 1:200-1:1000
Species reactivity	Human
Form	Liquid
Storage buffer	0.01M PBS, pH 7.4, 0.05% Sodium Azide.
Concentration	1 mg/ml
Purity	>95% as determined by SDS-PAGE.
Clonality	Monoclonal
Isotype	IgG2b
Applications	ELISA, FCM, IF, IHC
Target	Stem cell factor, c-Kit ligand, sKITLG, Mast cell growth factor, MGF, Kit ligand, SCF, KITLG
Purification	Protein A/G purified from cell culture supernatant.
Endotoxin level	Please contact with the lab for this information.
Accession	P21583
Stability and Storage	Use a manual defrost freezer and avoid repeated freeze-thaw cycles. Store at 4°C short term (1-2 weeks). Store at -20°C 12 months. Store at -80°C long term.

Note

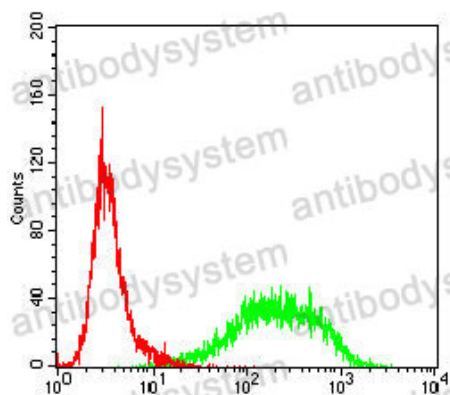
For research use only.

Data Image



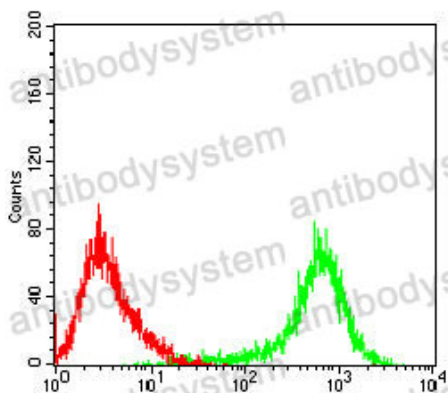
Flow Cytometry

Flow cytometric analysis of Hela cells using KITLG mouse mAb (green) and negative control (red).



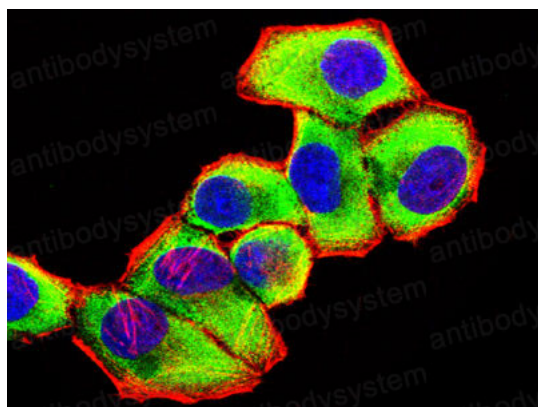
Flow Cytometry

Flow cytometric analysis of Jurkat cells using KITLG mouse mAb (green) and negative control (red).



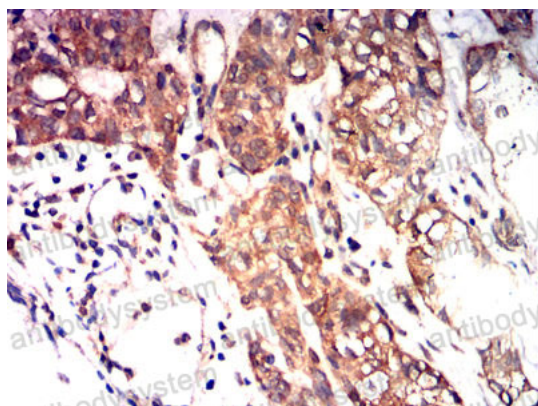
Flow Cytometry

Flow cytometric analysis of Raji cells using KITLG mouse mAb (green) and negative control (red).



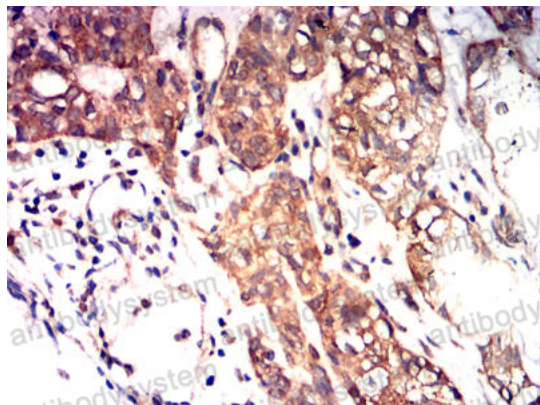
Immunofluorescence

Immunofluorescence analysis of HeLa cells using KITLG mouse mAb (green). Blue: DRAQ5 fluorescent DNA dye. Red: Actin filaments have been labeled with Alexa Fluor- 555 phalloidin.



Immunohistochemical

Immunohistochemical analysis of paraffin-embedded human Bladder cancer tissues using KITLG mouse mAb with DAB staining.



Immunohistochemical

Immunohistochemical analysis of paraffin-embedded human Bladder cancer tissues using KITLG mouse mAb with DAB staining.