

Anti-CD363/S1PR1 Antibody (R3F85)

Summary

Catalog No.	RHD45801
Clone ID	R3F85
Host species	Mouse
Tested applications	ELISA: 1:10000, FCM: 1:200-1:400, IHC: 1:200-1:1000, WB: 1:500-1:2000
Species reactivity	Human
Form	Liquid
Storage buffer	0.01M PBS, pH 7.4, 0.05% Sodium Azide.
Concentration	1 mg/ml
Purity	>95% as determined by SDS-PAGE.
Clonality	Monoclonal
Isotype	IgG2a
Applications	ELISA, FCM, IHC, WB
Target	S1PR1, Sphingosine 1-phosphate receptor 1, Endothelial differentiation G-protein coupled receptor 1, EDG1, CHEDG1, Sphingosine 1-phosphate receptor Edg-1, S1P1, S1P receptor Edg-1, S1P receptor 1, CD363
Purification	Protein A/G purified from cell culture supernatant.
Endotoxin level	Please contact with the lab for this information.
Accession	P21453

Stability and Storage

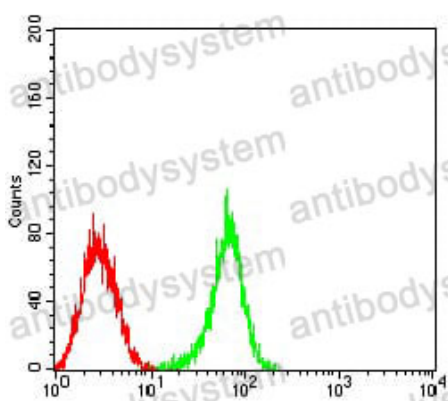
Use a manual defrost freezer and avoid repeated freeze-thaw cycles.

Store at 4°C short term (1-2 weeks). Store at -20°C 12 months. Store at -80°C long term.

Note

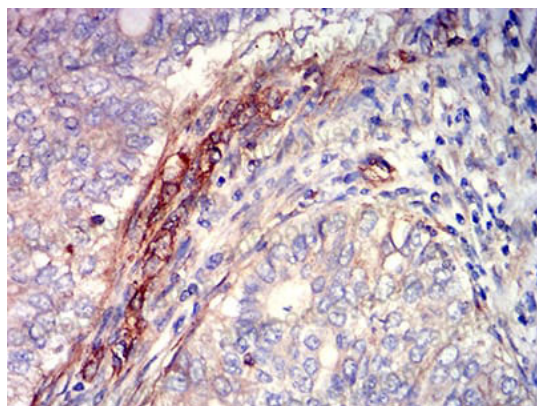
For research use only.

Data Image



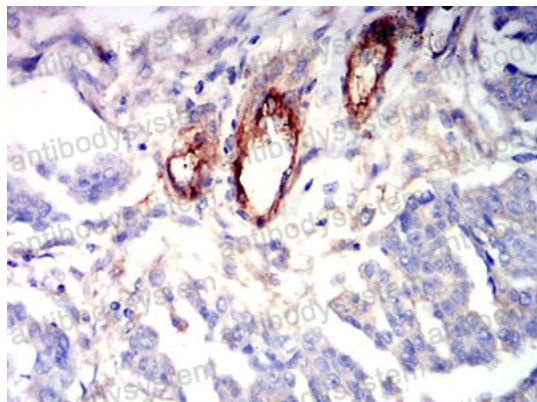
Flow Cytometry

Flow cytometric analysis of HL-60 cells using CD363 mouse mAb (green) and negative control (red).



Immunohistochemical

Immunohistochemical analysis of paraffin-embedded human cervical cancer tissues using CD363 mouse mAb with DAB staining.



Immunohistochemical

Immunohistochemical analysis of paraffin-embedded human ovarian cancer tissues using CD363 mouse mAb with DAB staining.