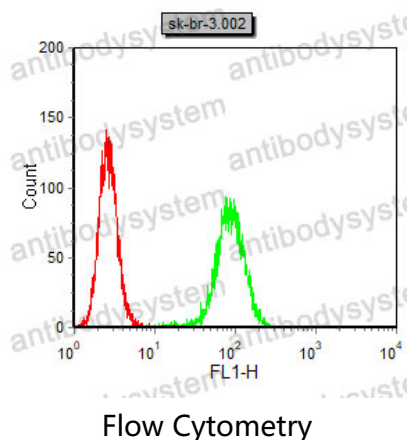


Anti-CHRM3 Antibody (R3F63)

Summary

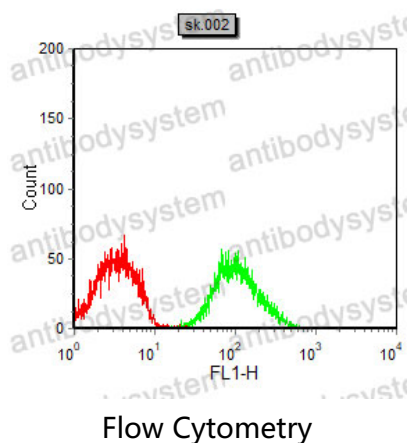
Catalog No.	RHD38803
Clone ID	R3F63
Host species	Mouse
Tested applications	FCM: 1:200-1:400, IF: 1:25-1:50, IHC: 1:200-1:400
Species reactivity	Human, Mouse, Rabbit
Form	Liquid
Storage buffer	0.01M PBS, pH 7.4, 0.05% Sodium Azide.
Concentration	1 mg/ml
Purity	>95% as determined by SDS-PAGE.
Clonality	Monoclonal
Isotype	IgG2a
Applications	FCM, IF, IHC
Target	CHRM3, Muscarinic acetylcholine receptor M3
Purification	Protein A/G purified from cell culture supernatant.
Endotoxin level	Please contact with the lab for this information.
Accession	P20309
Stability and Storage	Use a manual defrost freezer and avoid repeated freeze-thaw cycles. Store at 4°C short term (1-2 weeks). Store at -20°C 12 months. Store at -80°C long term.
Note	For research use only.

Data Image



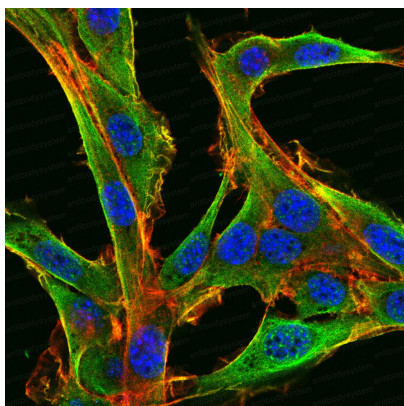
Flow Cytometry

Flow cytometric analysis of SK-BR-3 cells using CHRM3 mouse mAb (green) and negative control (red).



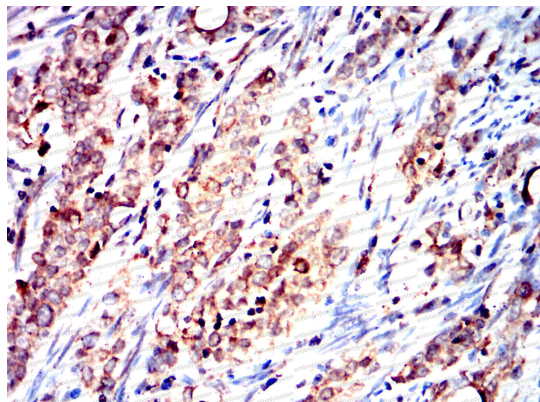
Flow Cytometry

Flow cytometric analysis of SK-N-SH cells using CHRM3 mouse mAb (green) and negative control (red).



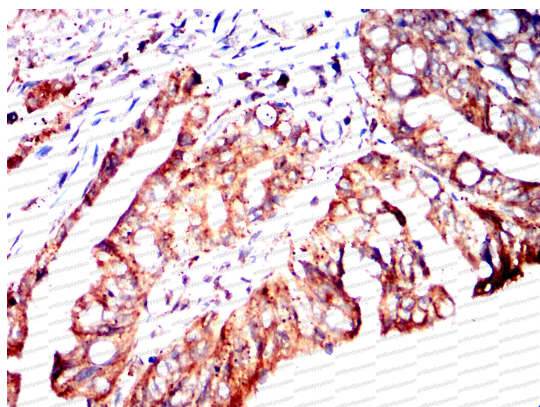
Immunofluorescence

Confocal Immunofluorescence analysis of NIH3T3 cells using CHRM3 mouse mAb (green). Red: Actin filaments have been labeled with Alexa Fluor-555 phalloidin. Blue: DRAQ5 fluorescent DNA dye.



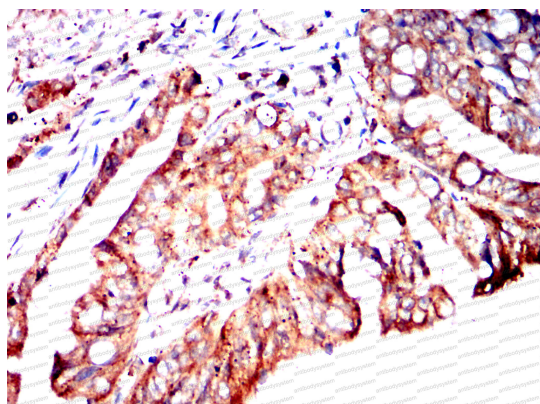
Immunohistochemical

Immunohistochemical analysis of paraffin-embedded human cervical cancer tissues using CHR3 mouse mAb with DAB staining.



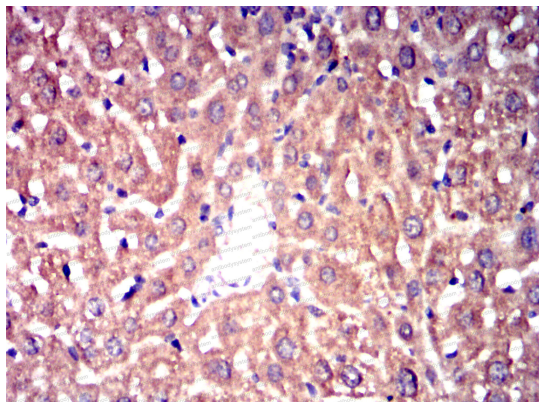
Immunohistochemical

Immunohistochemical analysis of paraffin-embedded human rectal cancer tissues using CHR3 mouse mAb with DAB staining.



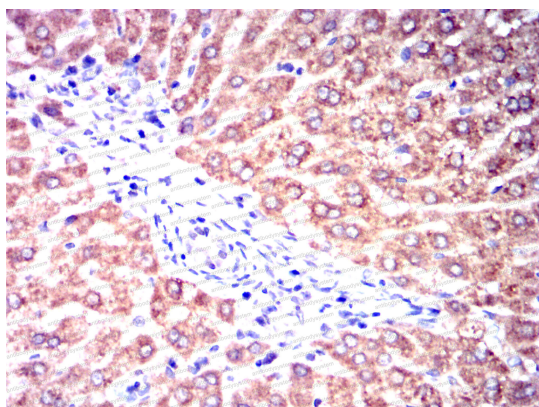
Immunohistochemical

Immunohistochemical analysis of paraffin-embedded human rectal cancer tissues using CHR3 mouse mAb with DAB staining.



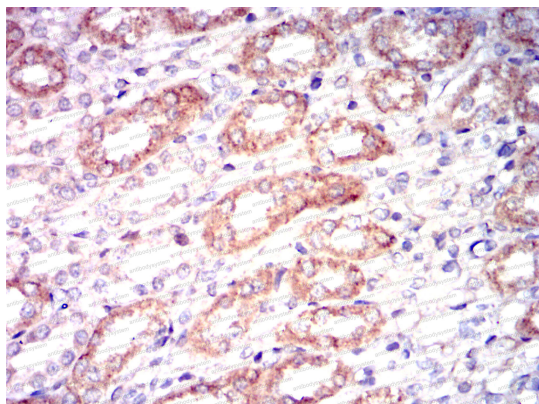
Immunohistochemical

Immunohistochemical analysis of paraffin-embedded mouse liver tissues using CHRM3 mouse mAb with DAB staining.



Immunohistochemical

Immunohistochemical analysis of paraffin-embedded rabbit liver tissues using CHRM3 mouse mAb with DAB staining.



Immunohistochemical

Immunohistochemical analysis of paraffin-embedded rabbit kidney tissues using CHRM3 mouse mAb with DAB staining.