

Anti-CD22 Antibody (R3F61)

Summary

Catalog No.	RHD38503
Clone ID	R3F61
Host species	Mouse
Tested applications	ELISA: 1:10000, FCM: 1:200-1:400, IF: 1:50-1:200, IHC: 1:200-1:1000, WB: 1:500-1:2000
Species reactivity	Human
Form	Liquid
Storage buffer	0.01M PBS, pH 7.4, 0.05% Sodium Azide.
Concentration	1 mg/ml
Purity	>95% as determined by SDS-PAGE.
Clonality	Monoclonal
Isotype	IgG1
Applications	ELISA, FCM, IF, IHC, WB
Target	Sialic acid-binding Ig-like lectin 2, Siglec-2, CD22, T-cell surface antigen Leu-14, BL-CAM, SIGLEC2, B-lymphocyte cell adhesion molecule, B-cell receptor CD22
Purification	Protein A/G purified from cell culture supernatant.
Endotoxin level	Please contact with the lab for this information.
Accession	P20273

Stability and Storage

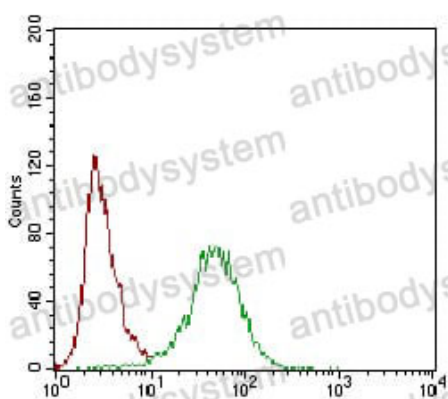
Use a manual defrost freezer and avoid repeated freeze-thaw cycles.

Store at 4°C short term (1-2 weeks). Store at -20°C 12 months. Store at -80°C long term.

Note

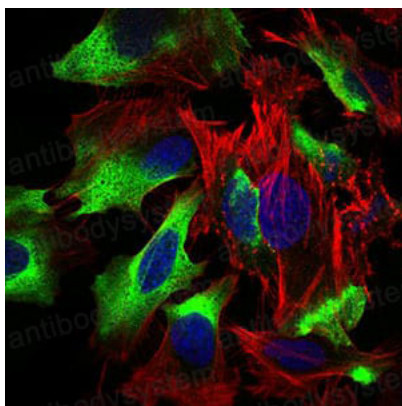
For research use only.

Data Image



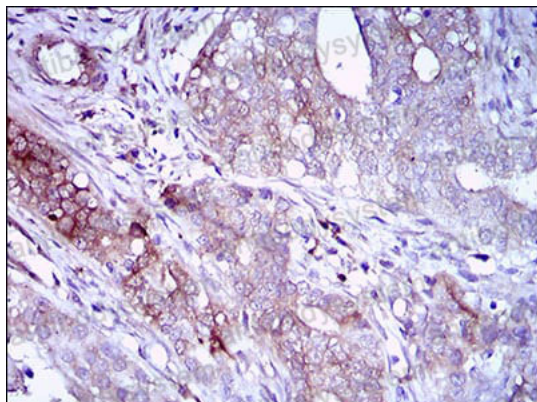
Flow Cytometry

Flow cytometric analysis of Hela cells using CD22 mouse mAb (green) and negative control (red).



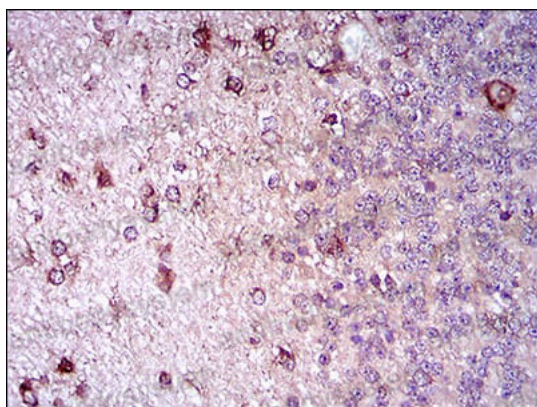
Immunofluorescence

Immunofluorescence analysis of Hela cells using CD22 mouse mAb (green). Blue: DRAQ5 fluorescent DNA dye. Red: Actin filaments have been labeled with Alexa Fluor-555 phalloidin.



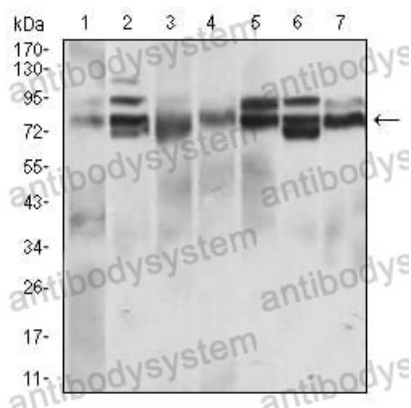
Immunohistochemical

Immunohistochemical analysis of paraffin-embedded human cervical cancer tissues using CD22 mouse mAb with DAB staining.



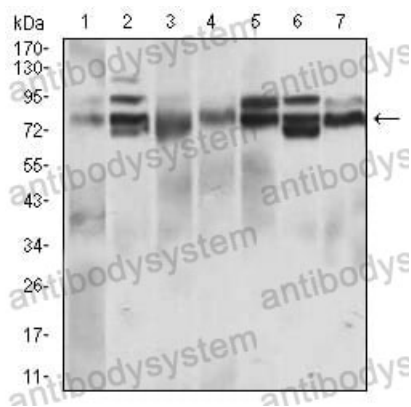
Immunohistochemical

Immunohistochemical analysis of paraffin-embedded human cerebellum tissues using CD22 mouse mAb with DAB staining.



Western blot

Western blot analysis using CD22 mouse mAb against L1210 (1), Hela (2), HEK293 (3), Jurkat (4), OCM-1 (5), A432 (6) and NIH/3T3 (7) cell lysate.



Western blot

Western blot analysis using CD22 mouse mAb against L1210 (1), Hela (2), HEK293 (3), Jurkat (4), OCM-1 (5), A432 (6) and NIH/3T3 (7) cell lysate.