

Anti-CD22 Antibody (R3F60)

Summary

Catalog No.	RHD38502
Clone ID	R3F60
Host species	Mouse
Tested applications	ELISA: 1:10000, FCM: 1:200-1:400, IF: 1:200-1:1000
Species reactivity	Human
Form	Liquid
Storage buffer	0.01M PBS, pH 7.4, 0.05% Sodium Azide.
Concentration	1 mg/ml
Purity	>95% as determined by SDS-PAGE.
Clonality	Monoclonal
Isotype	IgG1
Applications	ELISA, FCM, IF
Target	Sialic acid-binding Ig-like lectin 2, Siglec-2, CD22, T-cell surface antigen Leu-14, BL-CAM, SIGLEC2, B-lymphocyte cell adhesion molecule, B-cell receptor CD22
Purification	Protein A/G purified from cell culture supernatant.
Endotoxin level	Please contact with the lab for this information.
Accession	P20273

Stability and Storage

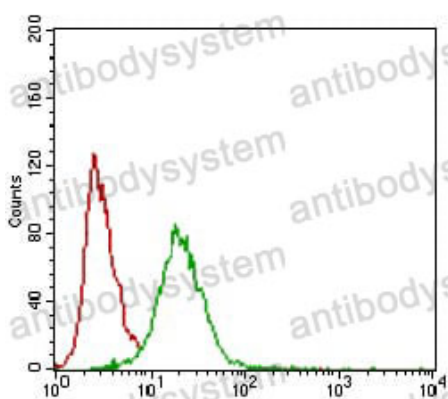
Use a manual defrost freezer and avoid repeated freeze-thaw cycles.

Store at 4°C short term (1-2 weeks). Store at -20°C 12 months. Store at -80°C long term.

Note

For research use only.

Data Image



Flow Cytometry

Flow cytometric analysis of Hela cells using CD22 mouse mAb (green) and negative control (red).



Immunofluorescence

Immunofluorescence analysis of Hela cells using CD22 mouse mAb (green). Blue: DRAQ5 fluorescent DNA dye. Red: Actin filaments have been labeled with Alexa Fluor-555 phalloidin.