

Anti-PPM1A Antibody (R3F58)

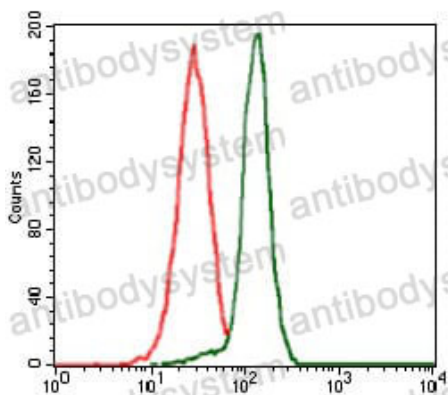
Summary

Catalog No.	RHE15802
Clone ID	R3F58
Host species	Mouse
Tested applications	ELISA: 1:10000, FCM: 1:200-1:400, WB: 1:500-1:2000
Species reactivity	Human, Monkey
Form	Liquid
Storage buffer	0.01M PBS, pH 7.4, 0.05% Sodium Azide.
Concentration	1 mg/ml
Purity	>95% as determined by SDS-PAGE.
Clonality	Monoclonal
Isotype	IgG1
Applications	ELISA, FCM, WB
Target	Protein phosphatase 2C isoform alpha, PPPM1A, Protein phosphatase 1A, Protein phosphatase 1A, PP2C-alpha, PPM1A
Purification	Protein A/G purified from cell culture supernatant.
Endotoxin level	Please contact with the lab for this information.
Accession	P35813
Stability and Storage	Use a manual defrost freezer and avoid repeated freeze-thaw cycles. Store at 4°C short term (1-2 weeks). Store at -20°C 12 months. Store at -80°C long term.

Note

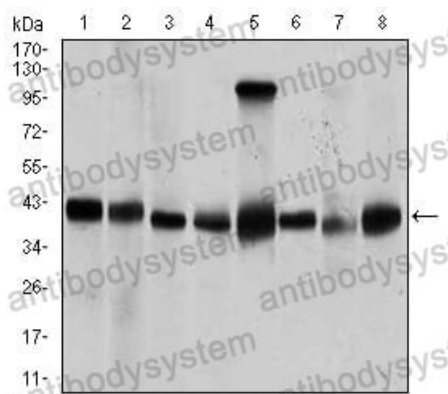
For research use only.

Data Image



Flow Cytometry

Flow cytometric analysis of HeLa cells using PPM1A mouse mAb (green) and negative control (red).



Western blot

Western blot analysis using PPM1A mouse mAb against Jurkat (1), Jurkat (2), A431 (3), HeLa (4), HEK293 (5), Raji (6), MCF-7 (7), and COS7 (8) cell lysate.