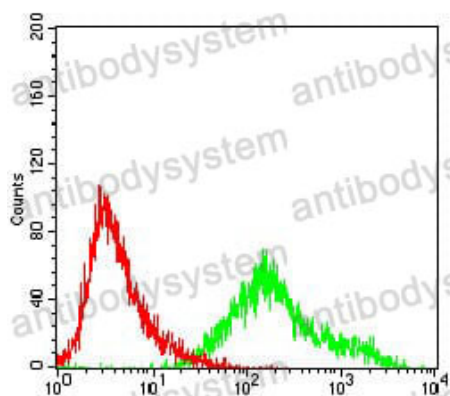


Anti-CCNA2 Antibody (R3F57)

Summary

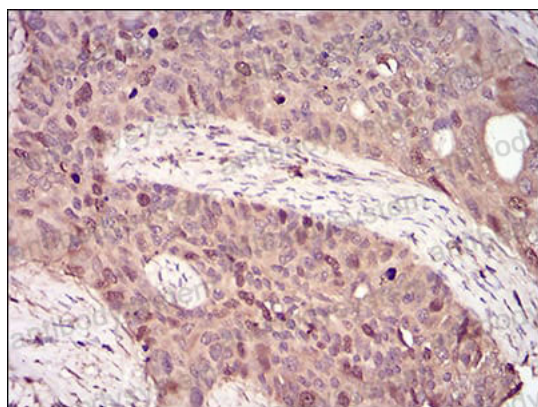
Catalog No.	RHD38205
Clone ID	R3F57
Host species	Mouse
Tested applications	ELISA: 1:10000, FCM: 1:200-1:400, IHC: 1:200-1:1000, WB: 1:500-1:2000
Species reactivity	Human
Form	Liquid
Storage buffer	0.01M PBS, pH 7.4, 0.05% Sodium Azide.
Concentration	1 mg/ml
Purity	>95% as determined by SDS-PAGE.
Clonality	Monoclonal
Isotype	IgG1
Applications	ELISA, FCM, IHC, WB
Target	Cyclin A, CCNA2, Cyclin-A2, Cyclin-A, CCNA, CCN1
Purification	Protein A/G purified from cell culture supernatant.
Endotoxin level	Please contact with the lab for this information.
Accession	P20248
Stability and Storage	Use a manual defrost freezer and avoid repeated freeze-thaw cycles. Store at 4°C short term (1-2 weeks). Store at -20°C 12 months. Store at -80°C long term.
Note	For research use only.

Data Image



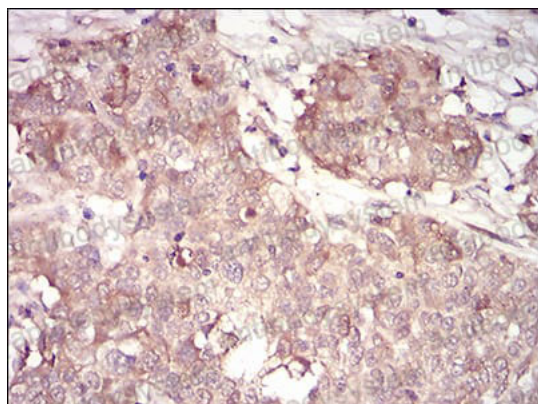
Flow Cytometry

Flow cytometric analysis of A431 cells using CCNA2 mouse mAb (green) and negative control (red).



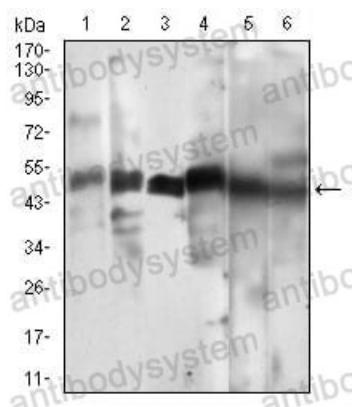
Immunohistochemical

Immunohistochemical analysis of paraffin-embedded human cervical cancer tissues using CCNA2 mouse mAb with DAB staining.



Immunohistochemical

Immunohistochemical analysis of paraffin-embedded human bladder cancer tissues using CCNA2 mouse mAb with DAB staining.



Western blot

Western blot analysis using CCNA2 mouse mAb against Hela (1), HEK293 (2), Jurkat (3), K562 (4), SK-Br-3 (5), NIH/3T3 (6) cell lysate.