

Anti-CD33 Antibody (R3F51)

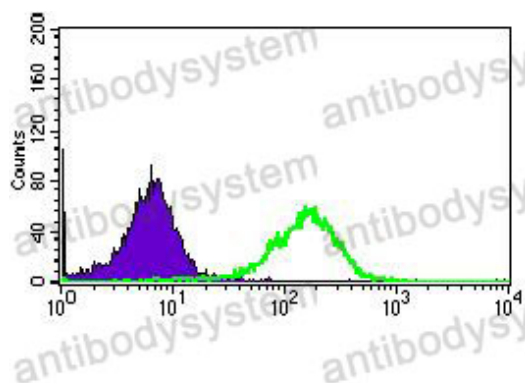
Summary

Catalog No.	RHD37502
Clone ID	R3F51
Host species	Mouse
Tested applications	ELISA: 1:10000, FCM: 1:200-1:400, IHC: 1:200-1:1000, WB: 1:500-1:2000
Species reactivity	Human
Form	Liquid
Storage buffer	0.01M PBS, pH 7.4, 0.05% Sodium Azide.
Concentration	1 mg/ml
Purity	>95% as determined by SDS-PAGE.
Clonality	Monoclonal
Isotype	IgG1
Applications	ELISA, FCM, IHC, WB
Target	Myeloid cell surface antigen CD33, Sialic acid-binding Ig-like lectin 3, Siglec-3, CD33, gp67, SIGLEC3
Purification	Protein A/G purified from cell culture supernatant.
Endotoxin level	Please contact with the lab for this information.
Accession	P20138
Stability and Storage	Use a manual defrost freezer and avoid repeated freeze-thaw cycles. Store at 4°C short term (1-2 weeks). Store at -20°C 12 months. Store at -80°C long term.

Note

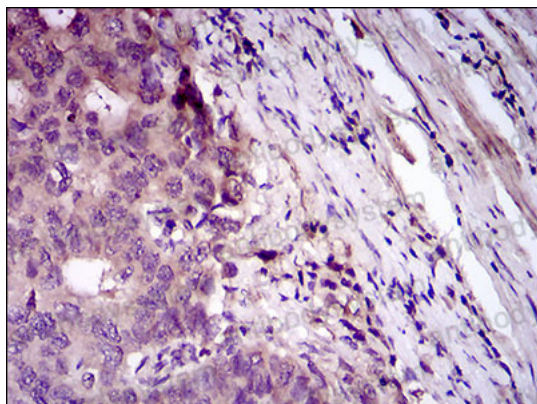
For research use only.

Data Image



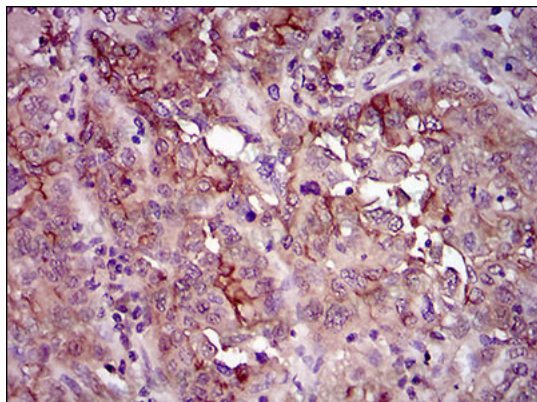
Flow Cytometry

Flow cytometric analysis of HepG2 cells using CD33 mouse mAb (green) and negative control (purple).



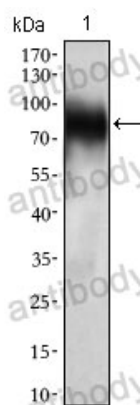
Immunohistochemical

Immunohistochemical analysis of paraffin-embedded esophageal cancer tissues using CD33 mouse mAb with DAB staining.



Immunohistochemical

Immunohistochemical analysis of paraffin-embedded endometrium tissues using CD33 mouse mAb with DAB staining.



Western blot

Western blot analysis using CD33 mouse mAb against THP-1 (cell lysate).