

Anti-Human Kappa Light Chain Antibody (R3F49)

Summary

Catalog No.	RHD36907
Clone ID	R3F49
Host species	Mouse
Tested applications	IHC: 1:500-1:1000
Species reactivity	Human
Form	Liquid
Storage buffer	0.01M PBS, pH 7.4, 0.05% Sodium Azide.
Concentration	1 mg/ml
Purity	>95% as determined by SDS-PAGE.
Clonality	Monoclonal
Isotype	IgG1
Applications	IHC
Target	Ig kappa chain C region EU, Ig kappa chain C region, Ig kappa chain C region ROY, Immunoglobulin kappa constant, IGKC, Ig kappa chain C region TI, Ig kappa chain C region OU, Ig kappa chain C region CUM, Ig kappa chain C region AG
Purification	Protein A/G purified from cell culture supernatant.
Endotoxin level	Please contact with the lab for this information.
Accession	P01834

Stability and Storage

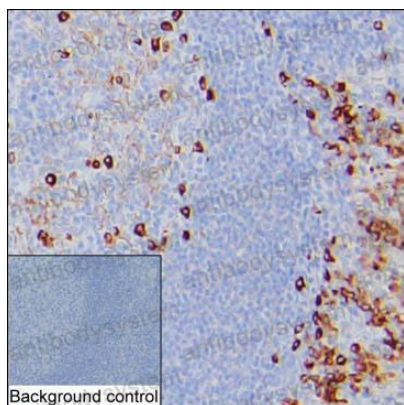
Use a manual defrost freezer and avoid repeated freeze-thaw cycles.

Store at 4°C short term (1-2 weeks). Store at -20°C 12 months. Store at -80°C long term.

Note

For research use only.

Data Image



Immunohistochemical

IHC-P analysis of tonsil tissue by IGKC antibody. Immunohistochemistry was performed using sections of the formalin-fixed paraffin- embedded tonsil; Result: Germinal center cells, non-germinal center cells and squamous epithelial cells are positively stained at the cytoplasm.