

# Anti-CD21/CR2 Antibody (R3F48)

## Summary

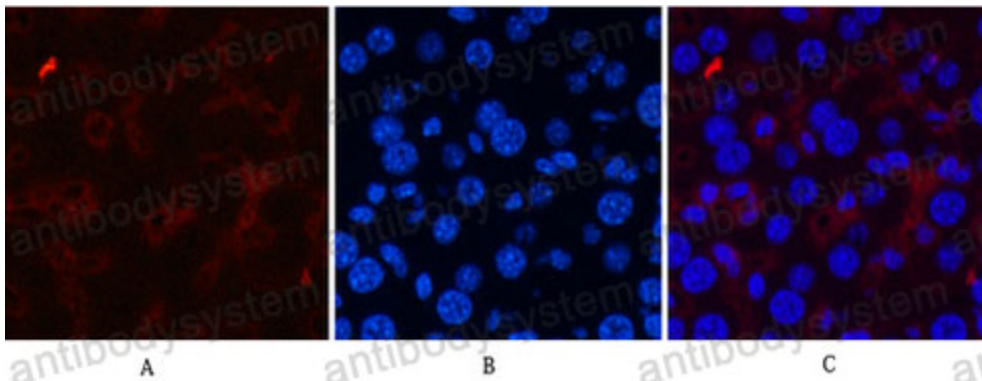
---

<b>Catalog No.</b>	RHD36801
<b>Clone ID</b>	R3F48
<b>Host species</b>	Mouse
<b>Tested applications</b>	IF: 1:50-1:200, IHC: 1:50-1:100
<b>Species reactivity</b>	Human, Mouse, Rat
<b>Form</b>	Liquid
<b>Storage buffer</b>	0.01M PBS, pH 7.4, 0.5% BSA, 0.05% Sodium Azide and 50% Glycerol.
<b>Concentration</b>	1 mg/ml
<b>Purity</b>	>95% as determined by SDS-PAGE.
<b>Clonality</b>	Monoclonal
<b>Isotype</b>	IgG1
<b>Applications</b>	IF, IHC
<b>Target</b>	Cr2, Complement C3d receptor, C3DR, Epstein-Barr virus receptor, Complement receptor type 2, CR2, EBV receptor, CD21
<b>Purification</b>	Protein A/G purified from cell culture supernatant.
<b>Endotoxin level</b>	Please contact with the lab for this information.
<b>Accession</b>	P20023
<b>Stability and Storage</b>	Use a manual defrost freezer and avoid repeated freeze-thaw cycles. Store at 4°C short term (1-2 weeks). Store at -20°C 12 months. Store at -80°C long term.

**Note**

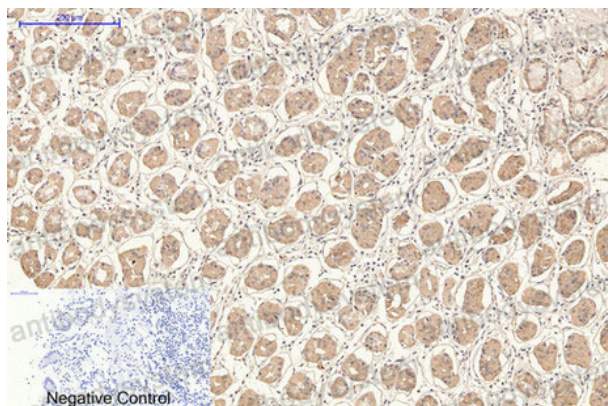
For research use only.

## Data Image



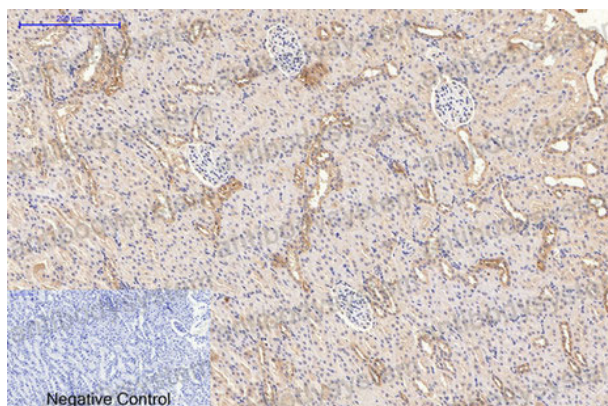
Immunofluorescence

Immunofluorescence analysis of CD21 in mouse liver tissue using CD21 antibody(2C5)(red),and DAPI (blue).



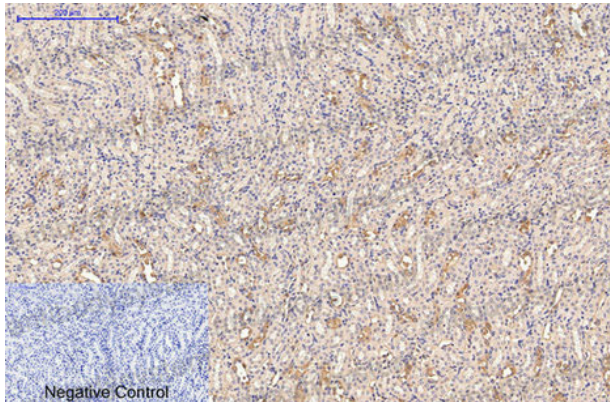
Immunohistochemical

Immunohistochemistry analysis of paraffin-embedded Human stomach tissue using CD21 antibody.High-pressure and temperature Sodium Citrate pH 6.0 was used for antigen retrieval.Negative control was used by secondary antibody only.



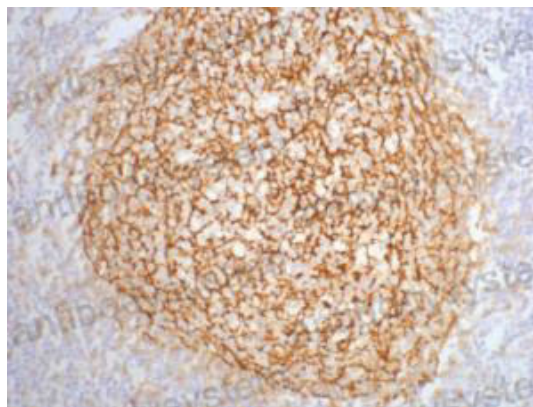
Immunohistochemical

Immunohistochemical analysis of paraffin-embedded Human tonsils using CD21 antibody.High-pressure and temperature Sodium Citrate pH 6.0 was used for antigen retrieval.Negative control was used by secondary antibody only.



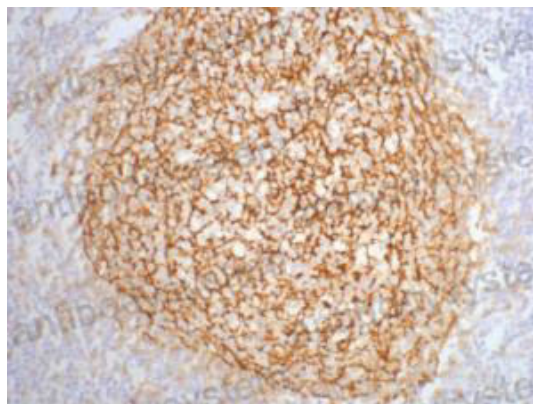
Immunohistochemical

Immunohistochemistry analysis of paraffin-embedded mouse kidney tissue using CD21 antibody. High-pressure and temperature Sodium Citrate pH 6.0 was used for antigen retrieval. Negative control was used by secondary antibody only.



Immunohistochemical

Immunohistochemistry analysis of paraffin-embedded Human tonsil tissue using CD21 antibody. High-pressure and temperature Sodium Citrate pH 6.0 was used for antigen retrieval.



Immunohistochemical

Immunohistochemistry analysis of paraffin-embedded Human tonsil tissue using CD21 antibody. High-pressure and temperature Sodium Citrate pH 6.0 was used for antigen retrieval.