

# Anti-NFKB1 Antibody (R3F45)

## Summary

---

<b>Catalog No.</b>	RHD35901
<b>Clone ID</b>	R3F45
<b>Host species</b>	Mouse
<b>Tested applications</b>	ELISA: 1:10000, FCM: 1:200-1:400, IF: 1:200-1:1000, IHC: 1:200-1:1000, WB: 1:500-1:2000
<b>Species reactivity</b>	Human
<b>Form</b>	Liquid
<b>Storage buffer</b>	0.01M PBS, pH 7.4, 0.05% Sodium Azide.
<b>Concentration</b>	1 mg/ml
<b>Purity</b>	>95% as determined by SDS-PAGE.
<b>Clonality</b>	Monoclonal
<b>Isotype</b>	IgG2a
<b>Applications</b>	ELISA, FCM, IF, IHC, WB
<b>Target</b>	Nuclear factor NF-kappa-B p105 subunit, EBP-1, NFKB1, Nuclear factor of kappa light polypeptide gene enhancer in B-cells 1, DNA-binding factor KBF1
<b>Purification</b>	Protein A/G purified from cell culture supernatant.
<b>Endotoxin level</b>	Please contact with the lab for this information.
<b>Accession</b>	P19838

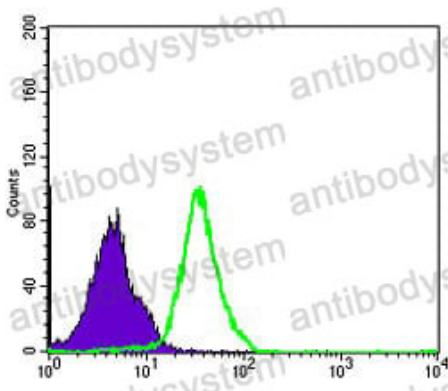
**Stability and Storage**

Use a manual defrost freezer and avoid repeated freeze-thaw cycles.

Store at 4°C short term (1-2 weeks). Store at -20°C 12 months. Store at -80°C long term.

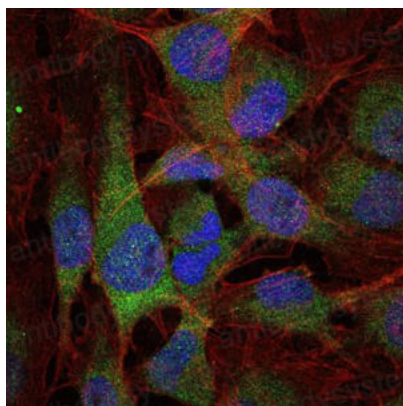
**Note**

For research use only.

**Data Image**

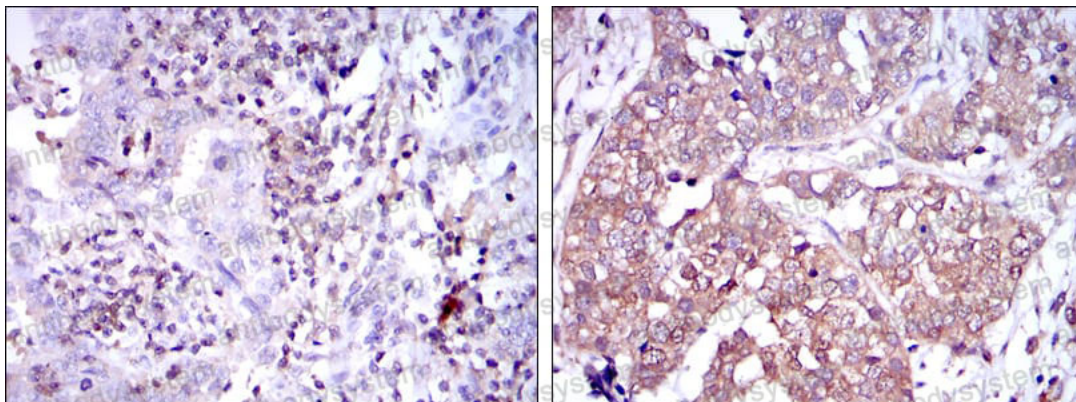
Flow Cytometry

Flow cytometric analysis of MCF-7 cells using NFKB1 mouse mAb (green) and negative control (purple).



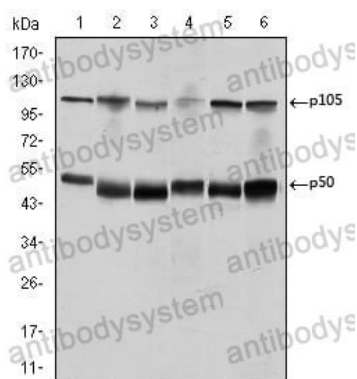
Immunofluorescence

Immunofluorescence analysis of U251 cells using NFKB1 mouse mAb (green). Blue: DRAQ5 fluorescent DNA dye. Red: Actin filaments have been labeled with Alexa Fluor-555 phalloidin.



Immunohistochemical

Immunohistochemical analysis of paraffin-embedded human intima cancer tissues (left) and human bladder cancer tissues (right) using NFKB1 mouse mAb with DAB staining.



Western blot

Western blot analysis using NFKB1 mouse mAb against K562 (1), Jurkat (2), A431 (3), HeLa (4), THP-1 (5) and MCF-7 (6) cell lysate.