

# Anti-HK1 Antibody (R3F24)

## Summary

---

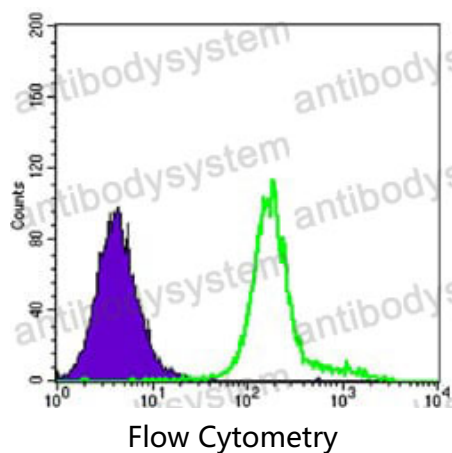
<b>Catalog No.</b>	RHD33303
<b>Clone ID</b>	R3F24
<b>Host species</b>	Mouse
<b>Tested applications</b>	FCM: 1:200-1:400, IF: 1:200-1:1000, IHC: 1:200-1:1000, WB: 1:500-1:2000
<b>Species reactivity</b>	Human, Mouse, Rat
<b>Form</b>	Liquid
<b>Storage buffer</b>	0.01M PBS, pH 7.4, 0.05% Sodium Azide.
<b>Concentration</b>	1 mg/ml
<b>Purity</b>	>95% as determined by SDS-PAGE.
<b>Clonality</b>	Monoclonal
<b>Isotype</b>	IgG1
<b>Applications</b>	FCM, IF, IHC, WB
<b>Target</b>	Hexokinase type I, Hexokinase-1, HK1, Brain form hexokinase, Hexokinase-A, HK I
<b>Purification</b>	Protein A/G purified from cell culture supernatant.
<b>Endotoxin level</b>	Please contact with the lab for this information.
<b>Accession</b>	P19367
<b>Stability and Storage</b>	Use a manual defrost freezer and avoid repeated freeze-thaw cycles. Store at 4°C short term (1-2 weeks). Store at -20°C 12 months. Store at -80°C long term.

**Note**

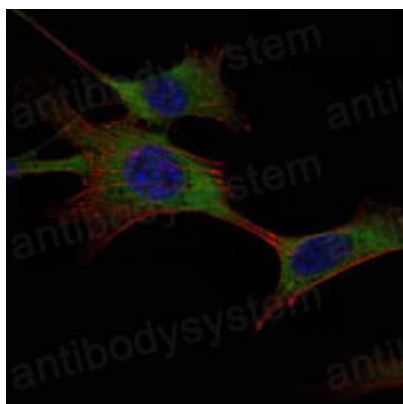
For research use only.

## Data Image

---

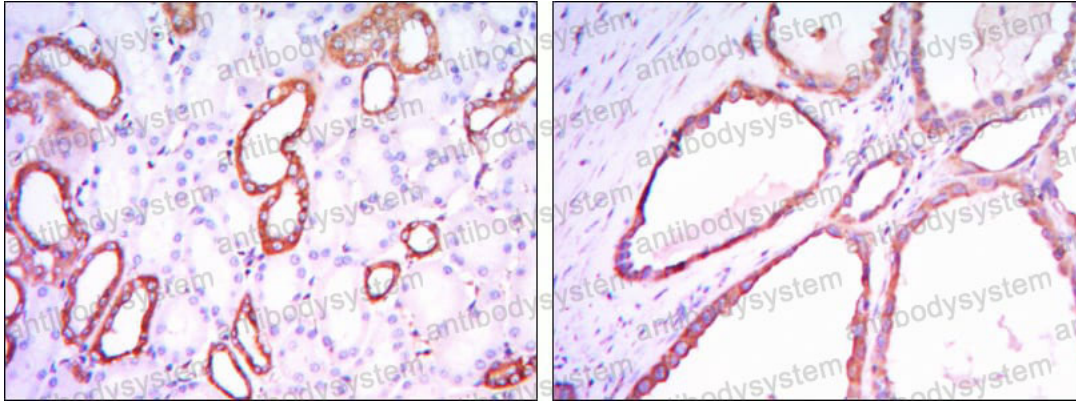


Flow cytometric analysis of K562 cells using HK1 mouse mAb (green) and negative control (purple).



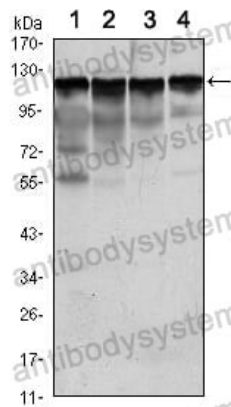
Immunofluorescence

Immunofluorescence analysis of NIH/3T3 cells using HK1 mouse mAb (green). Blue: DRAQ5 fluorescent DNA dye. Red: Actin filaments have been labeled with Alexa Fluor-555 phalloidin.



Immunohistochemical analysis of paraffin-embedded human kidney tissues using HK1 mouse mAb with DAB staining.

Immunohistochemical



Western blot

Western blot analysis using HK1 mouse mAb against Jurkat (1), Hela (2), HepG2 (3) and NIH/3T3 (4) cell lysate.