

Anti-PLCG1 Antibody (R3F19)

Summary

Catalog No.	RHD32606
Clone ID	R3F19
Host species	Mouse
Tested applications	ELISA: 1:10000, FCM: 1:200-1:400
Species reactivity	Human
Form	Liquid
Storage buffer	0.01M PBS, pH 7.4, 0.05% Sodium Azide.
Concentration	1 mg/ml
Purity	>95% as determined by SDS-PAGE.
Clonality	Monoclonal
Isotype	IgG2a
Applications	ELISA, FCM
Target	Phosphoinositide phospholipase C-gamma-1, PLC1, PLC-II, Phospholipase C-II, Phospholipase C-gamma-1, PLC-gamma-1, PLC-148, PLCG1, 1-phosphatidylinositol 4,5-bisphosphate phosphodiesterase gamma-1
Purification	Protein A/G purified from cell culture supernatant.
Endotoxin level	Please contact with the lab for this information.
Accession	P19174

Recombinant Proteins & Antibodies

Stability and Storage

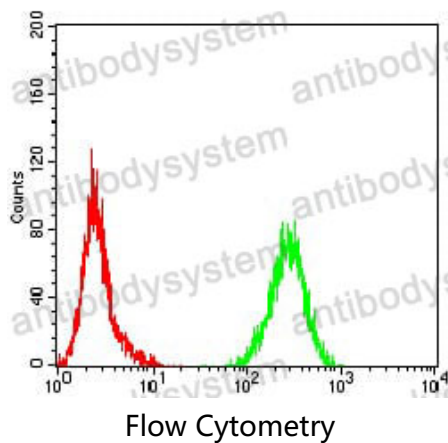
Use a manual defrost freezer and avoid repeated freeze-thaw cycles.

Store at 4°C short term (1-2 weeks). Store at -20°C 12 months. Store at -80°C long term.

Note

For research use only.

Data Image



Flow cytometric analysis of Hela cells using PLCG1 mouse mAb (green) and negative control (red).