

Anti-PLCG1 Antibody (R3F18)

Summary

Catalog No.	RHD32605
Clone ID	R3F18
Host species	Mouse
Tested applications	ELISA: 1:10000, FCM: 1:200-1:400, WB: 1:500-1:2000
Species reactivity	Human, Rat
Form	Liquid
Storage buffer	0.01M PBS, pH 7.4, 0.05% Sodium Azide.
Concentration	1 mg/ml
Purity	>95% as determined by SDS-PAGE.
Clonality	Monoclonal
Isotype	IgG2a
Applications	ELISA, FCM, WB
Target	Phosphoinositide phospholipase C-gamma-1, PLC1, PLC-II, Phospholipase C-II, Phospholipase C-gamma-1, PLC-gamma-1, PLC-148, PLCG1, 1-phosphatidylinositol 4,5-bisphosphate phosphodiesterase gamma-1
Purification	Protein A/G purified from cell culture supernatant.
Endotoxin level	Please contact with the lab for this information.
Accession	P19174

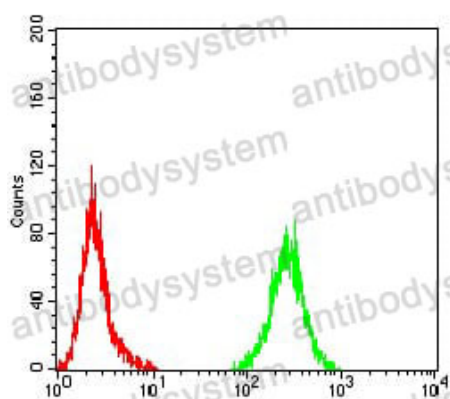
Stability and Storage

Use a manual defrost freezer and avoid repeated freeze-thaw cycles.

Store at 4°C short term (1-2 weeks). Store at -20°C 12 months. Store at -80°C long term.

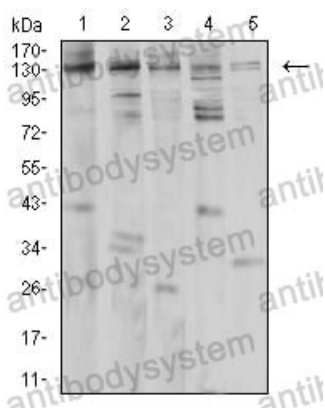
Note

For research use only.

Data Image

Flow Cytometry

Flow cytometric analysis of HeLa cells using PLCG1 mouse mAb (green) and negative control (red).



Western blot

Western blot analysis using PLCG1 mouse mAb against Jurkat (1), K562 (2), A431 (3), HeLa (4), and PC-12 (5) cell lysate.