

# Anti-PLCG1 Antibody (R3F17)

## Summary

---

<b>Catalog No.</b>	RHD32604
<b>Clone ID</b>	R3F17
<b>Host species</b>	Mouse
<b>Tested applications</b>	ELISA: 1:10000, FCM: 1:200-1:400, IF: 1:200-1:1000, IHC: 1:200-1:1000, WB: 1:500-1:2000
<b>Species reactivity</b>	Human, Mouse
<b>Form</b>	Liquid
<b>Storage buffer</b>	0.01M PBS, pH 7.4, 0.05% Sodium Azide.
<b>Concentration</b>	1 mg/ml
<b>Purity</b>	>95% as determined by SDS-PAGE.
<b>Clonality</b>	Monoclonal
<b>Isotype</b>	IgG1
<b>Applications</b>	ELISA, FCM, IF, IHC, WB
<b>Target</b>	Phosphoinositide phospholipase C-gamma-1, PLC1, PLC-II, Phospholipase C-II, Phospholipase C-gamma-1, PLC-gamma-1, PLC-148, PLCG1, 1-phosphatidylinositol 4,5-bisphosphate phosphodiesterase gamma-1
<b>Purification</b>	Protein A/G purified from cell culture supernatant.
<b>Endotoxin level</b>	Please contact with the lab for this information.
<b>Accession</b>	P19174

**Stability and Storage**

Use a manual defrost freezer and avoid repeated freeze-thaw cycles.

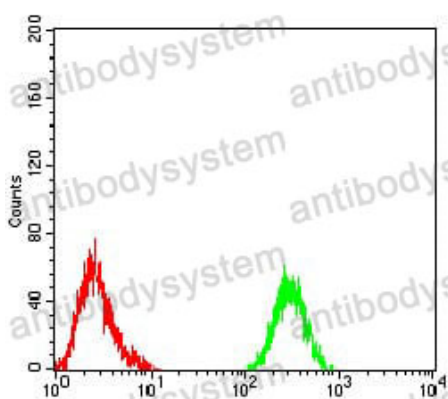
Store at 4°C short term (1-2 weeks). Store at -20°C 12 months. Store at -80°C long term.

**Note**

For research use only.

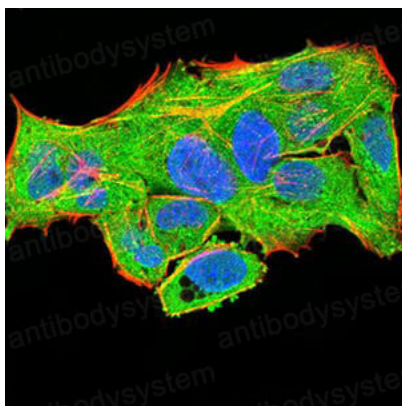
**Data Image**

---



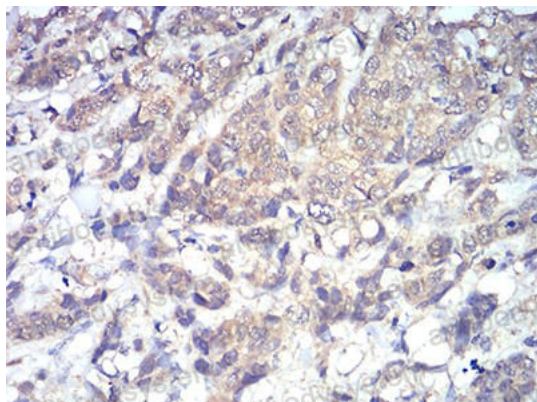
Flow Cytometry

Flow cytometric analysis of Raji cells using PLCG1 mouse mAb (green) and negative control (red).



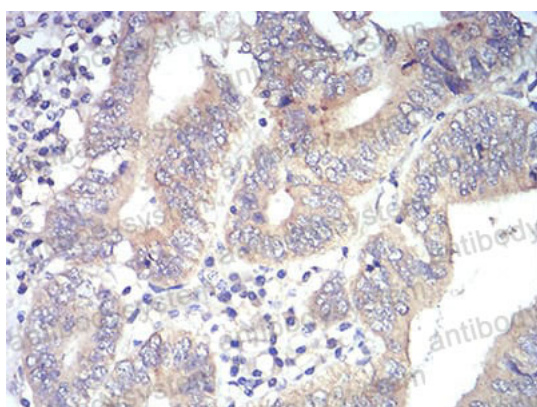
Immunofluorescence

Immunofluorescence analysis of Hela cells using PLCG1 mouse mAb (green). Blue: DRAQ5 fluorescent DNA dye. Red: Actin filaments have been labeled with Alexa Fluor-555 phalloidin.



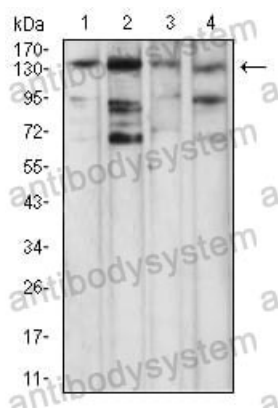
Immunohistochemical

Immunohistochemical analysis of paraffin-embedded human breast cancer tissues using PLCG1 mouse mAb with DAB staining.



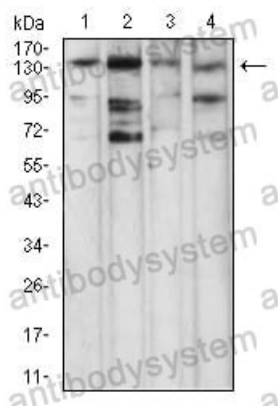
Immunohistochemical

Immunohistochemical analysis of paraffin-embedded human esophagus tissues using PLCG1 mouse mAb with DAB staining.



Western blot

Western blot analysis using PLCG1 mouse mAb against NIH/3T3 (1), Jurkat (2), A431 (3), and Hela (4) cell lysate.



Western blot

Western blot analysis using PLCG1 mouse mAb against NIH/3T3 (1), Jurkat (2), A431 (3), and HeLa (4) cell lysate.