

Anti-TSPAN8 Antibody (R3F15)

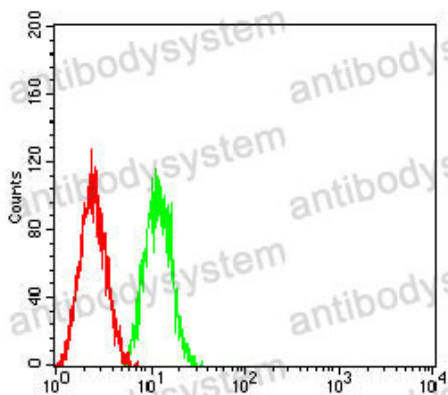
Summary

Catalog No.	RHD32002
Clone ID	R3F15
Host species	Mouse
Tested applications	ELISA: 1:10000, FCM: 1:200-1:400, IHC: 1:200-1:1000, WB: 1:500-1:2000
Species reactivity	Human
Form	Liquid
Storage buffer	0.01M PBS, pH 7.4, 0.05% Sodium Azide.
Concentration	1 mg/ml
Purity	>95% as determined by SDS-PAGE.
Clonality	Monoclonal
Isotype	IgG1
Applications	ELISA, FCM, IHC, WB
Target	TSPAN8, Tspan-8, Tumor-associated antigen CO-029, TM4SF3, Transmembrane 4 superfamily member 3, Tetraspanin-8
Purification	Protein A/G purified from cell culture supernatant.
Endotoxin level	Please contact with the lab for this information.
Accession	P19075
Stability and Storage	Use a manual defrost freezer and avoid repeated freeze-thaw cycles. Store at 4°C short term (1-2 weeks). Store at -20°C 12 months. Store at -80°C long term.

Note

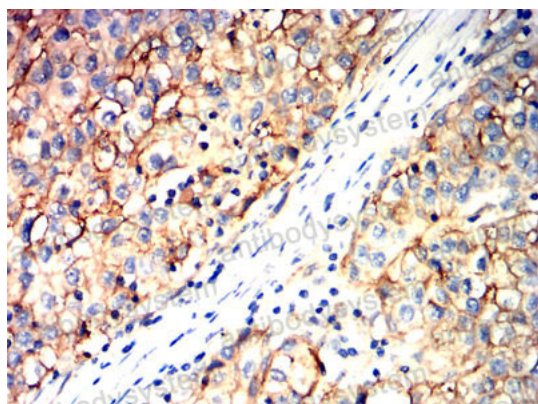
For research use only.

Data Image



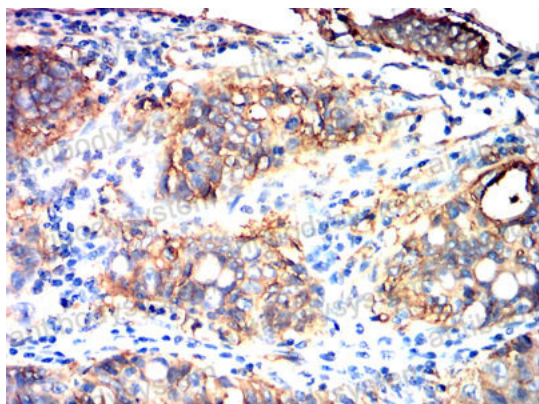
Flow Cytometry

Flow cytometric analysis of HepG2 cells using TSPAN8 mouse mAb (green) and negative control (red).



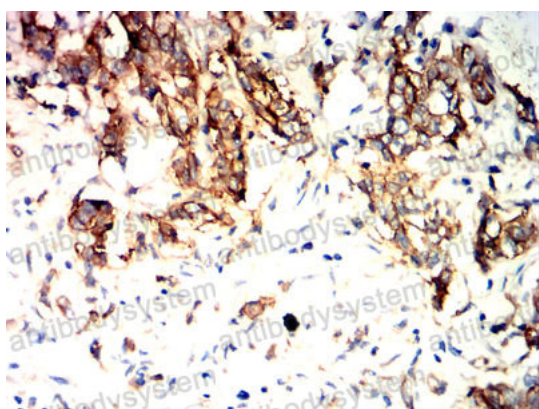
Immunohistochemical

Immunohistochemical analysis of paraffin-embedded human liver cancer tissues using TSPAN8 mouse mAb with DAB staining.



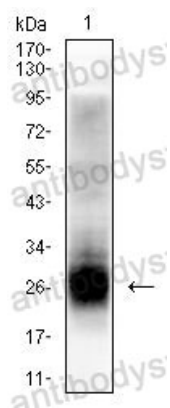
Immunohistochemical

Immunohistochemical analysis of paraffin-embedded human rectal cancer tissues using TSPAN8 mouse mAb with DAB staining.



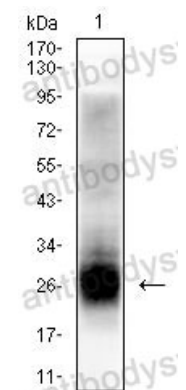
Immunohistochemical

Immunohistochemical analysis of paraffin-embedded human stomach cancer tissues using TSPAN8 mouse mAb with DAB staining.



Western blot

Western blot analysis using TSPAN8 mouse mAb against HT-29 cell lysate.



Western blot

Western blot analysis using TSPAN8 mouse mAb against HT-29 cell lysate.