

Anti-CD325/CDH2 Antibody (R3F14)

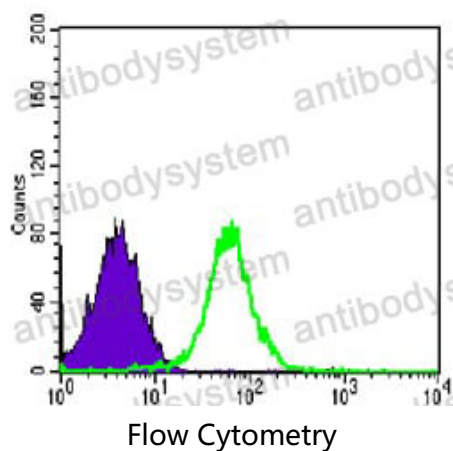
Summary

Catalog No.	RHD31902
Clone ID	R3F14
Host species	Mouse
Tested applications	FCM: 1:200-1:400, IF: 1:200-1:1000, IHC: 1:200-1:1000, WB: 1:500-1:2000
Species reactivity	Human, Mouse, Rat, Rabbit, Monkey
Form	Liquid
Storage buffer	0.01M PBS, pH 7.4, 0.05% Sodium Azide.
Concentration	1 mg/ml
Purity	>95% as determined by SDS-PAGE.
Clonality	Monoclonal
Isotype	IgG1
Applications	FCM, IF, IHC, WB
Target	N-cadherin, CDH2, Cadherin-2, CD325, CDw325, Neural cadherin, CDHN, NCAD
Purification	Protein A/G purified from cell culture supernatant.
Endotoxin level	Please contact with the lab for this information.
Accession	P19022
Stability and Storage	Use a manual defrost freezer and avoid repeated freeze-thaw cycles. Store at 4°C short term (1-2 weeks). Store at -20°C 12 months. Store at -80°C long term.

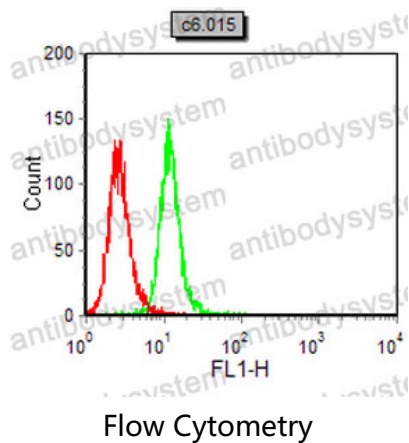
Note

For research use only.

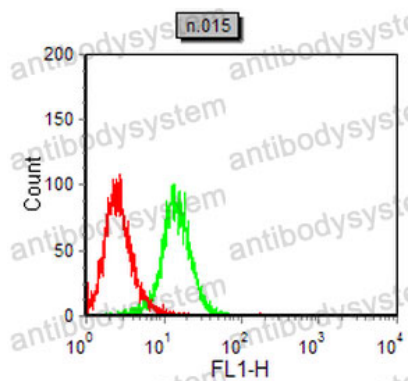
Data Image



Flow cytometric analysis of PC-2 cells using CDH2 mouse mAb (green) and negative control (purple).

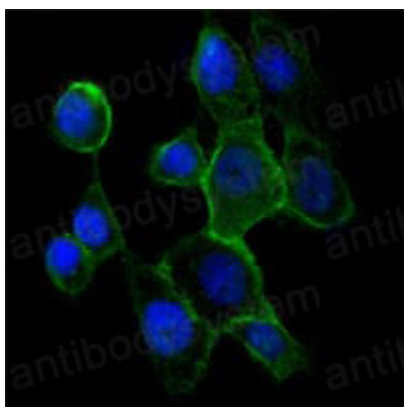


Flow cytometric analysis of C6 cells using CDH2 mouse mAb (green) and negative control (red).



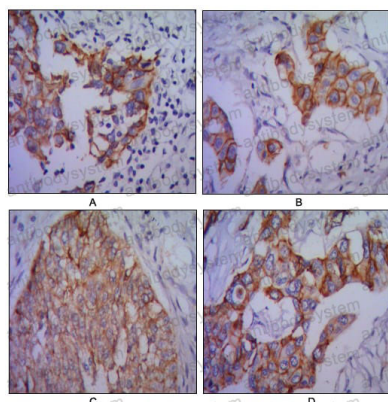
Flow Cytometry

Flow cytometric analysis of NIH/3T3 cells using CDH2 mouse mAb (green) and negative control (red).



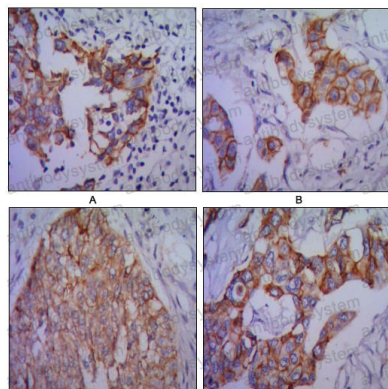
Immunofluorescence

Immunofluorescence analysis of A431 cells using CDH2 mouse mAb (green). Blue: DRAQ5 fluorescent DNA dye.



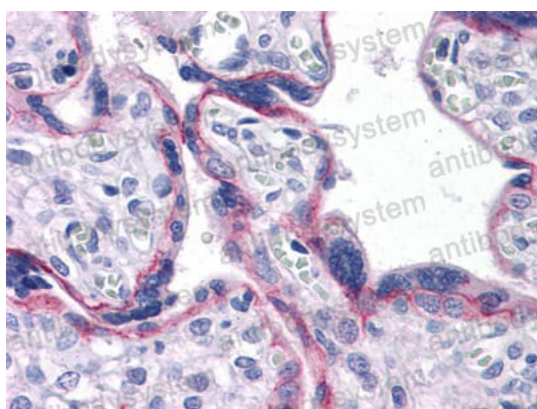
Immunohistochemical

Immunohistochemical analysis of paraffin-embedded human lung cancer (A), colon cancer (B), ovarian cancer (C) and mammary cancer (D), using CDH2 mouse mAb with DAB staining.



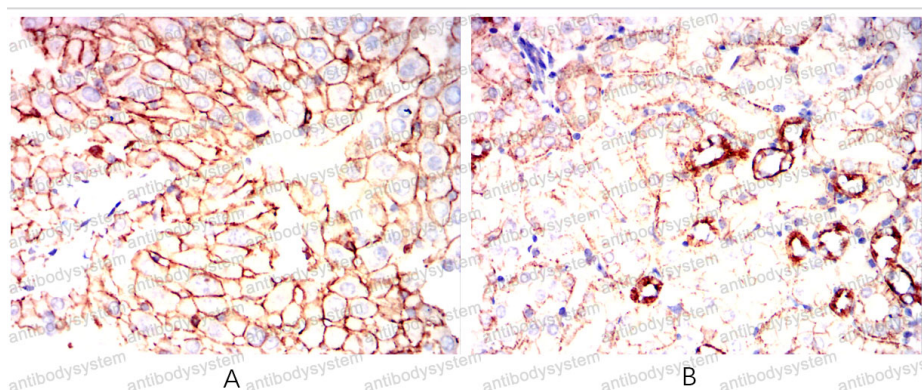
Immunohistochemical

Immunohistochemical analysis of paraffin-embedded human lung cancer (A), colon cancer (B), ovarian cancer (C) and mammary cancer(D), using CDH2 mouse mAb with DAB staining.



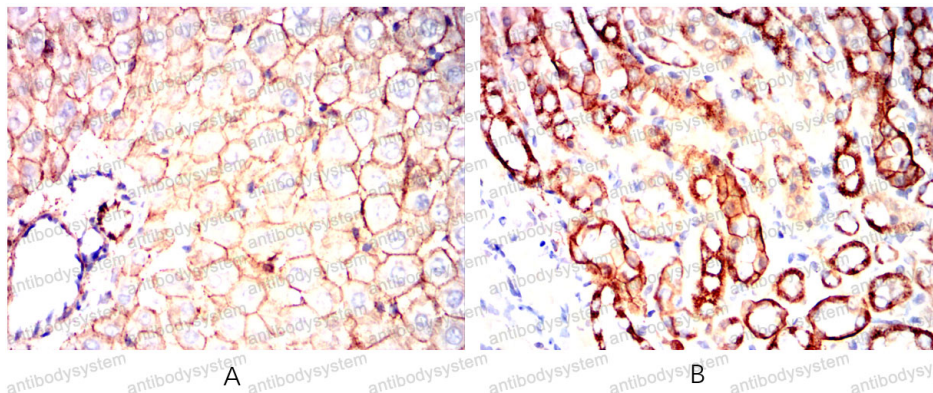
Immunohistochemical

Immunohistochemical analysis of paraffin-embedded human Placenta tissues using CDH2 mouse mAb



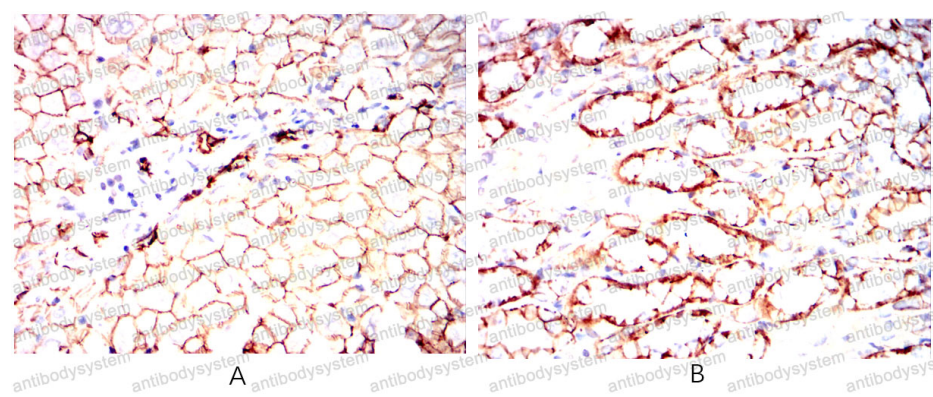
Immunohistochemical

Immunohistochemical analysis of paraffin-embedded Mouse liver(A)Mouse kidney(B) using CDH2 mouse mAb with DAB staining.



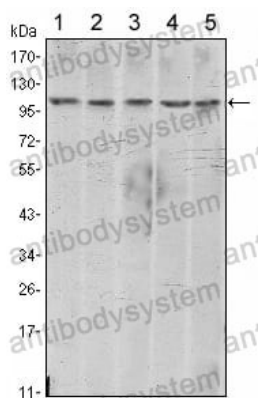
Immunohistochemical analysis of paraffin-embedded Rat testis(A)Rat kidney(B) using CDH2 mouse mAb with DAB staining.

Immunohistochemical



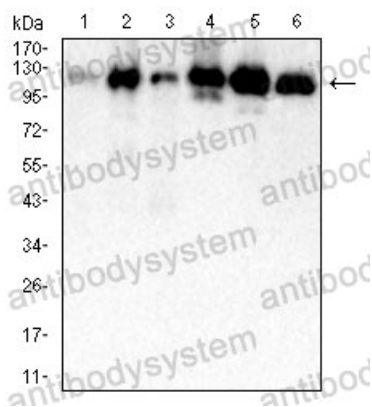
Immunohistochemical analysis of paraffin-embedded Rabbit testis(A)Rabbit kidney(B) using CDH2 mouse mAb with DAB staining.

Immunohistochemical



Western blot analysis using CDH2 mouse mAb against A431 (1), NIH/3T3 (2), HeLa (3), C6 (4) and LNCaP (5) cell lysate.

Western blot



Western blot

Western blot analysis using CDH2 mouse mAb against COS7(1),NRK(2),NIH/3T3(3),PC-12(4) cell lysate.