

# Anti-KRT4 Antibody (R3F12)

## Summary

---

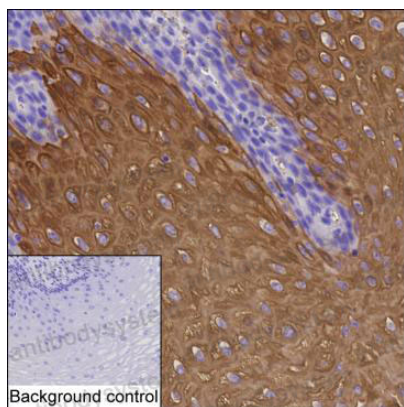
<b>Catalog No.</b>	RHD31705
<b>Clone ID</b>	R3F12
<b>Host species</b>	Mouse
<b>Tested applications</b>	IHC: 1:100-1:200, WB: 1:500-1:1000
<b>Species reactivity</b>	Human
<b>Form</b>	Liquid
<b>Storage buffer</b>	0.01M PBS, pH 7.4, 0.05% Sodium Azide.
<b>Concentration</b>	1 mg/ml
<b>Purity</b>	>95% as determined by SDS-PAGE.
<b>Clonality</b>	Monoclonal
<b>Isotype</b>	IgG1
<b>Applications</b>	IHC, WB
<b>Target</b>	CYK4, Keratin-4, Type-II keratin Kb4, Cytokeratin-4, KRT4, K4, Keratin, type II cytoskeletal 4, CK-4
<b>Purification</b>	Protein A/G purified from cell culture supernatant.
<b>Endotoxin level</b>	Please contact with the lab for this information.
<b>Accession</b>	P19013
<b>Stability and Storage</b>	Use a manual defrost freezer and avoid repeated freeze-thaw cycles. Store at 4°C short term (1-2 weeks). Store at -20°C 12 months. Store at -80°C long term.

**Note**

For research use only.

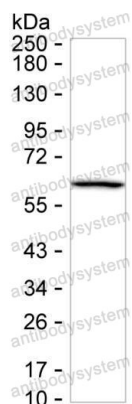
## Data Image

---



Immunohistochemical

IHC-P analysis of esophageal carcinoma tissue by KRT4 antibody (RHD31705). IHC-P was performed using sections of the formalin-fixed paraffin-embedded esophageal carcinoma tissue; Result: Squamous epithelial cells are positively stained at the cytoplasm.



Western blot

Western blot analysis using KRT4 mouse mAb against A-431 lysate