

Anti-KRT4 Antibody (R3F11)

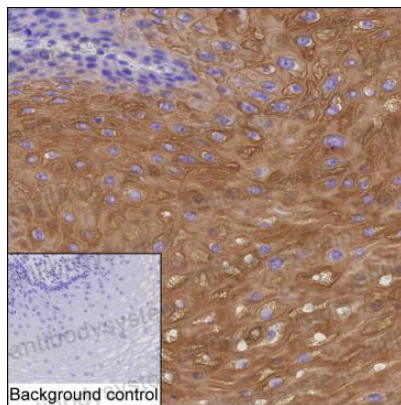
Summary

Catalog No.	RHD31704
Clone ID	R3F11
Host species	Mouse
Tested applications	IHC: 1:100-1:200, IP: 1:100-1:200
Species reactivity	Human
Form	Liquid
Storage buffer	0.01M PBS, pH 7.4, 0.05% Sodium Azide.
Concentration	1 mg/ml
Purity	>95% as determined by SDS-PAGE.
Clonality	Monoclonal
Isotype	IgG1
Applications	IHC, IP
Target	CYK4, Keratin-4, Type-II keratin Kb4, Cytokeratin-4, KRT4, K4, Keratin, type II cytoskeletal 4, CK-4
Purification	Protein A/G purified from cell culture supernatant.
Endotoxin level	Please contact with the lab for this information.
Accession	P19013
Stability and Storage	Use a manual defrost freezer and avoid repeated freeze-thaw cycles. Store at 4°C short term (1-2 weeks). Store at -20°C 12 months. Store at -80°C long term.

Note

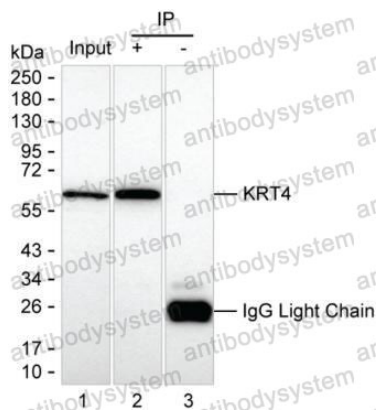
For research use only.

Data Image



Immunohistochemical

IHC-P analysis of esophageal carcinoma tissue by KRT4 antibody (RHD31704). IHC-P was performed using sections of the formalin-fixed paraffin-embedded esophageal carcinoma tissue; Result: Squamous epithelial cells are positively stained at the cytoplasm.



Immunoprecipitation

Lane 1: A-431 lysate ; Lane 2: KRT4 immunoprecipitated from A-431 lysate by RHD31704; Lane 3: The same Lane 2 but use IgG isotype control antibody ; Result: RHD31704 can immunoprecipitate KRT4;