

# Anti-KRT15 Antibody (R3F10)

## Summary

---

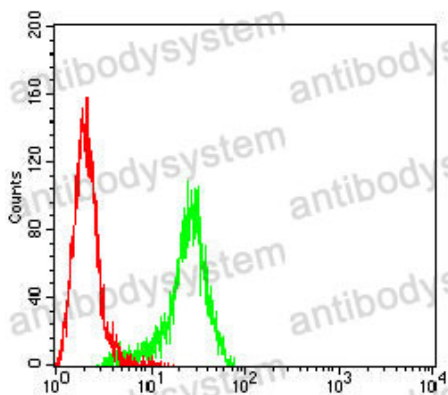
<b>Catalog No.</b>	RHD31601
<b>Clone ID</b>	R3F10
<b>Host species</b>	Mouse
<b>Tested applications</b>	ELISA: 1:10000, FCM: 1:200-1:400, IHC: 1:200-1:1000, WB: 1:500-1:2000
<b>Species reactivity</b>	Human
<b>Form</b>	Liquid
<b>Storage buffer</b>	0.01M PBS, pH 7.4, 0.05% Sodium Azide.
<b>Concentration</b>	1 mg/ml
<b>Purity</b>	>95% as determined by SDS-PAGE.
<b>Clonality</b>	Monoclonal
<b>Isotype</b>	IgG1
<b>Applications</b>	ELISA, FCM, IHC, WB
<b>Target</b>	KRT15, Cytokeratin-15, Keratin-15, KRTB, K15, CK-15, Keratin, type I cytoskeletal 15
<b>Purification</b>	Protein A/G purified from cell culture supernatant.
<b>Endotoxin level</b>	Please contact with the lab for this information.
<b>Accession</b>	P19012
<b>Stability and Storage</b>	Use a manual defrost freezer and avoid repeated freeze-thaw cycles. Store at 4°C short term (1-2 weeks). Store at -20°C 12 months. Store at -80°C long term.

Note

For research use only.

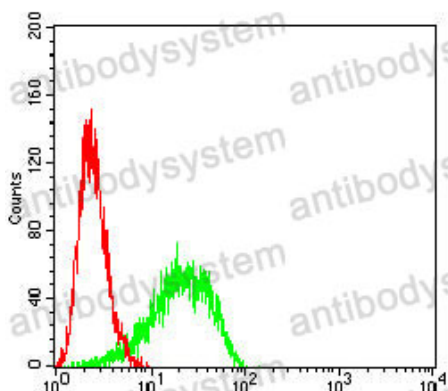
## Data Image

---



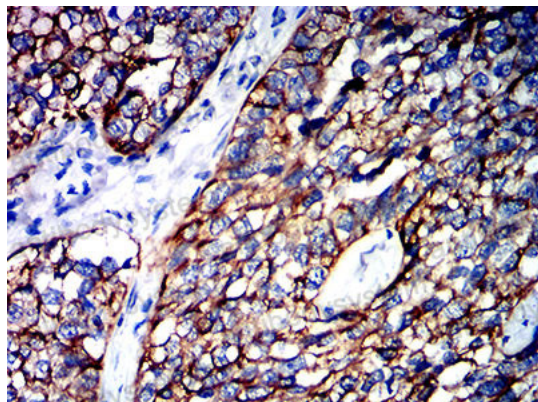
Flow Cytometry

Flow cytometric analysis of PC-3 cells using KRT15 mouse mAb (green) and negative control (red).



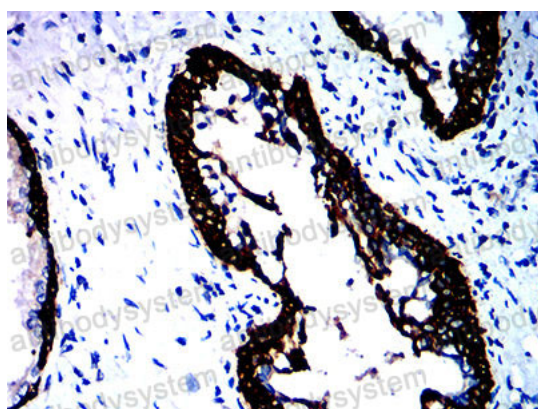
Flow Cytometry

Flow cytometric analysis of Hela cells using KRT15 mouse mAb (green) and negative control (red).



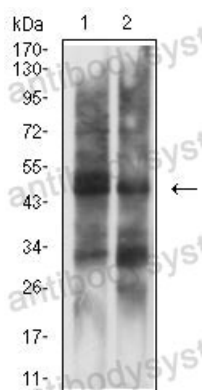
Immunohistochemical

Immunohistochemical analysis of paraffin-embedded human bladder cancer tissues using KRT15 mouse mAb with DAB staining.



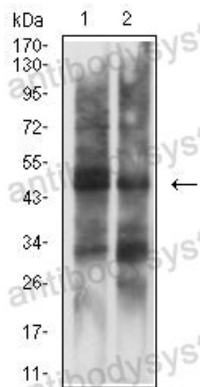
Immunohistochemical

Immunohistochemical analysis of paraffin-embedded human prostate cancer tissues using KRT15 mouse mAb with DAB staining.



Western blot

Western blot analysis using KRT15 mouse mAb against A431 (1) and Hela (2) cell lysate.



Western blot

Western blot analysis using KRT15 mouse mAb against A431 (1) and HeLa (2) cell lysate.