

Anti-KRT15 Antibody (R3F09)

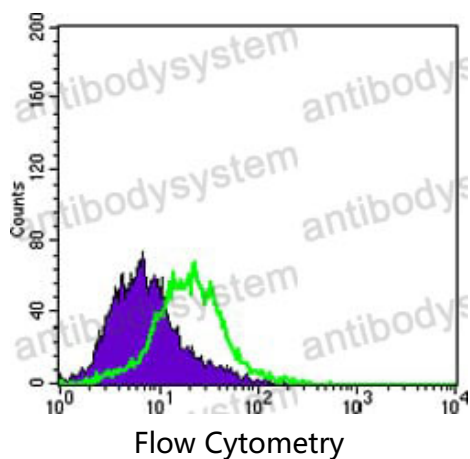
Summary

Catalog No.	RHD31602
Clone ID	R3F09
Host species	Mouse
Tested applications	FCM: 1:200-1:400, IF: 1:200-1:1000, IHC: 1:200-1:1000, WB: 1:500-1:2000
Species reactivity	Human
Form	Liquid
Storage buffer	0.01M PBS, pH 7.4, 0.05% Sodium Azide.
Concentration	1 mg/ml
Purity	>95% as determined by SDS-PAGE.
Clonality	Monoclonal
Isotype	IgG2a
Applications	FCM, IF, IHC, WB
Target	KRT15, Cytokeratin-15, Keratin-15, KRTB, K15, CK-15, Keratin, type I cytoskeletal 15
Purification	Protein A/G purified from cell culture supernatant.
Endotoxin level	Please contact with the lab for this information.
Accession	P19012
Stability and Storage	Use a manual defrost freezer and avoid repeated freeze-thaw cycles. Store at 4°C short term (1-2 weeks). Store at -20°C 12 months. Store at -80°C long term.

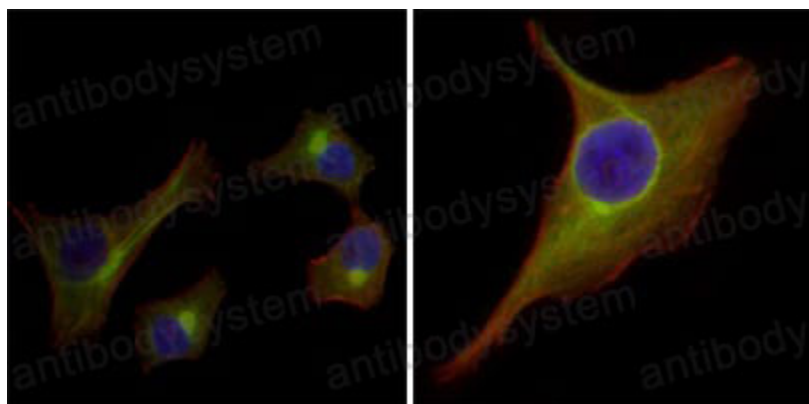
Note

For research use only.

Data Image

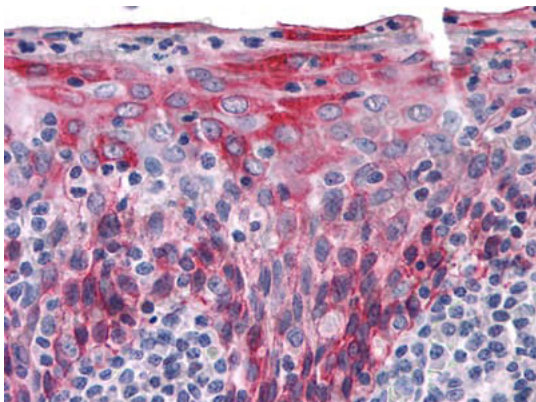


Flow cytometric analysis of PACN-1 cells using KRT15 mouse mAb (green) and negative control (purple).



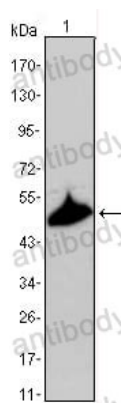
Immunofluorescence analysis of HepG2(left) and PACN-1 (right) cells using KRT15 mouse mAb (green). Red: Actin filaments have been labeled with DY-554 phalloidin. Blue: DRAQ5 fluorescent DNA dye.

Immunofluorescence



Immunohistochemical

Immunohistochemical analysis of paraffin-embedded human Tonsil tissues using KRT15 mouse mAb



Western blot

Western blot analysis using KRT15 mouse mAb against A431 cell lysate.