

Anti-XRCC1 Antibody (R3F08)

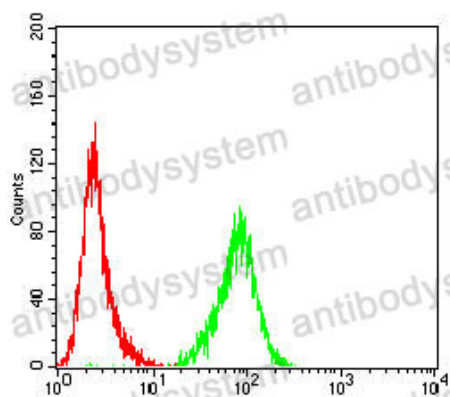
Summary

Catalog No.	RHD31503
Clone ID	R3F08
Host species	Mouse
Tested applications	ELISA: 1:10000, FCM: 1:200-1:400, IHC: 1:200-1:1000, WB: 1:500-1:2000
Species reactivity	Human, Monkey
Form	Liquid
Storage buffer	0.01M PBS, pH 7.4, 0.05% Sodium Azide.
Concentration	1 mg/ml
Purity	>95% as determined by SDS-PAGE.
Clonality	Monoclonal
Isotype	IgG1
Applications	ELISA, FCM, IHC, WB
Target	DNA repair protein XRCC1, XRCC1, X-ray repair cross-complementing protein 1
Purification	Protein A/G purified from cell culture supernatant.
Endotoxin level	Please contact with the lab for this information.
Accession	P18887
Stability and Storage	Use a manual defrost freezer and avoid repeated freeze-thaw cycles. Store at 4°C short term (1-2 weeks). Store at -20°C 12 months. Store at -80°C long term.

Note

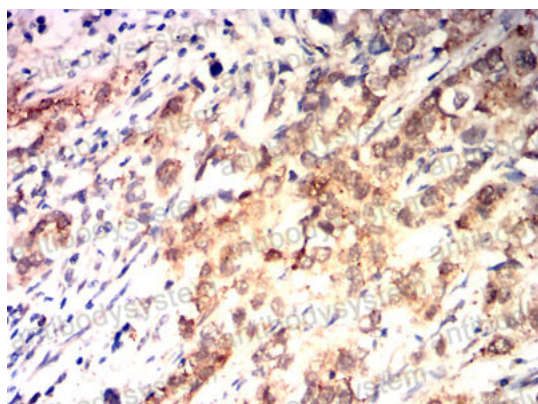
For research use only.

Data Image



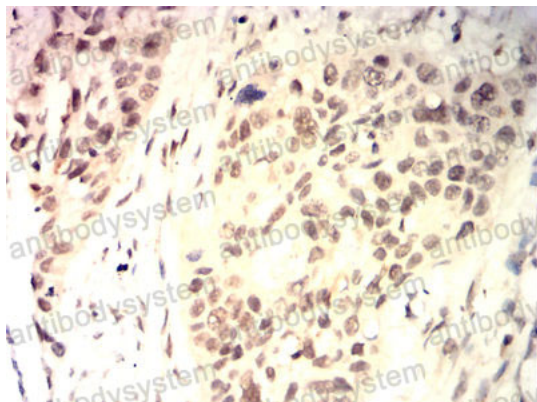
Flow Cytometry

Flow cytometric analysis of Jurkat cells using XRCC1 mouse mAb (green) and negative control (red).



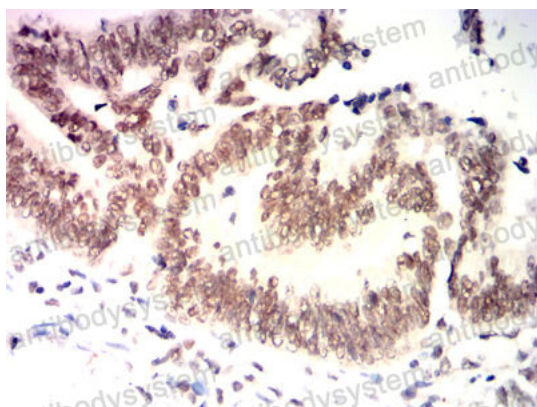
Immunohistochemical

Immunohistochemical analysis of paraffin-embedded human bladder Cancer tissues using Jurkat mouse mAb with DAB staining.



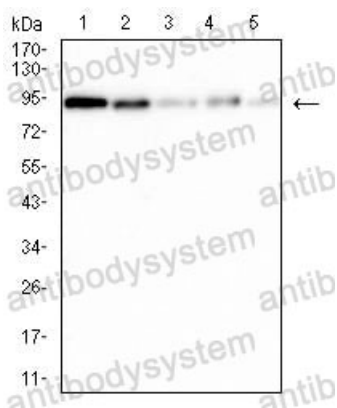
Immunohistochemical

Immunohistochemical analysis of paraffin-embedded human esophageal cancer tissues using Jurkat mouse mAb with DAB staining.



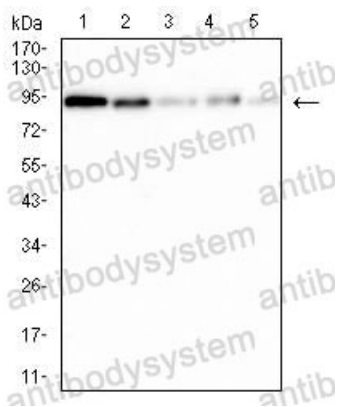
Immunohistochemical

Immunohistochemical analysis of paraffin-embedded human rectal cancer tissues using Jurkat mouse mAb with DAB staining.



Western blot

Western blot analysis using XRCC1 mouse mAb against Hela (1), Jurkat (2), k562 (3), SK-OV-3 (4), and COS-7 (5) cell lysate.



Western blot

Western blot analysis using XRCC1 mouse mAb against Hela (1), Jurkat (2), k562 (3), SK-OV-3 (4), and COS-7 (5) cell lysate.