

Anti-ATF4/CREB2 Antibody (R3F06)

Summary

| | |
|----------------------------|---|
| Catalog No. | RHD31103 |
| Clone ID | R3F06 |
| Host species | Mouse |
| Tested applications | ELISA: 1:10000, IHC: 1:200-1:1000, WB: 1:500-1:2000 |
| Species reactivity | Human |
| Form | Liquid |
| Storage buffer | 0.01M PBS, pH 7.4, 0.05% Sodium Azide. |
| Concentration | 1 mg/ml |
| Purity | >95% as determined by SDS-PAGE. |
| Clonality | Monoclonal |
| Isotype | IgG1 |
| Applications | ELISA, IHC, WB |
| Target | TaxREB67, ATF4, cAMP-dependent transcription factor ATF-4, TXREB, CREB2, cAMP-responsive element-binding protein 2, Tax-responsive enhancer element-binding protein 67, Activating transcription factor 4, CREB-2, Cyclic AMP-dependent transcription factor ATF-4, Cyclic AMP-responsive element-binding protein 2 |
| Purification | Protein A/G purified from cell culture supernatant. |
| Endotoxin level | Please contact with the lab for this information. |
| Accession | P18848 |

Stability and Storage

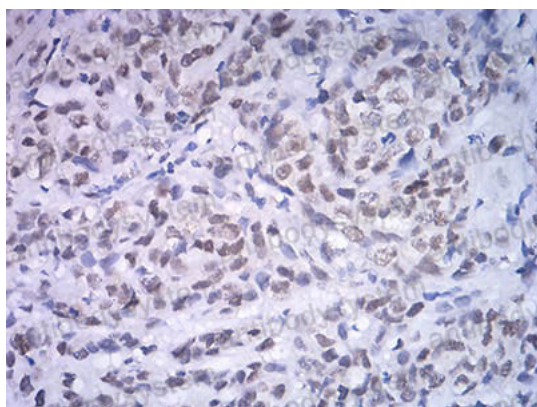
Use a manual defrost freezer and avoid repeated freeze-thaw cycles.

Store at 4°C short term (1-2 weeks). Store at -20°C 12 months. Store at -80°C long term.

Note

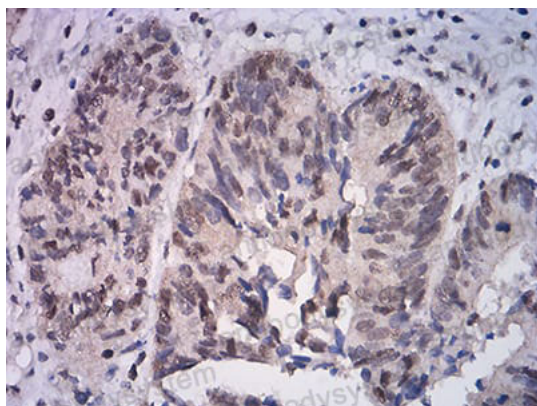
For research use only.

Data Image



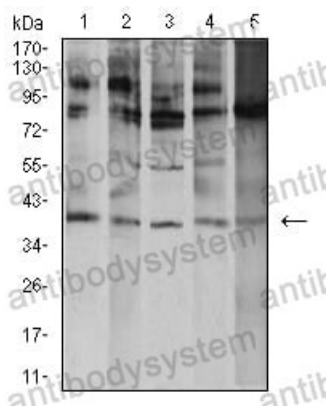
Immunohistochemical

Immunohistochemical analysis of paraffin-embedded human breast cancer tissues using ATF4 mouse mAb with DAB staining.



Immunohistochemical

Immunohistochemical analysis of paraffin-embedded human rectum cancer tissues using ATF4 mouse mAb with DAB staining.



Western blot

Western blot analysis using ATF4 mouse mAb against K562 (1), A431 (2), Hela (3), HEK293 (4), and Ramos (5) cell lysate.