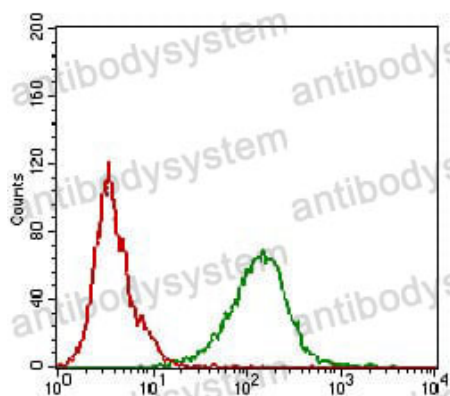


Anti-CD138/SDC1 Antibody (R3F03)

Summary

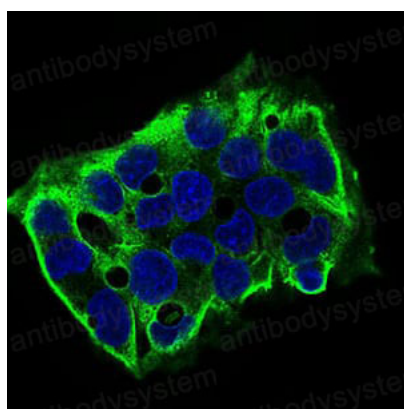
Catalog No.	RHD30801
Clone ID	R3F03
Host species	Mouse
Tested applications	ELISA: 1:10000, FCM: 1:200-1:400, IF: 1:200-1:1000, WB: 1:500-1:2000
Species reactivity	Human, Mouse
Form	Liquid
Storage buffer	0.01M PBS, pH 7.4, 0.05% Sodium Azide.
Concentration	1 mg/ml
Purity	>95% as determined by SDS-PAGE.
Clonality	Monoclonal
Isotype	IgG1
Applications	ELISA, FCM, IF, WB
Target	CD138, SDC1, SDC, Syndecan-1, SYND1
Purification	Protein A/G purified from cell culture supernatant.
Endotoxin level	Please contact with the lab for this information.
Accession	P18827
Stability and Storage	Use a manual defrost freezer and avoid repeated freeze-thaw cycles. Store at 4°C short term (1-2 weeks). Store at -20°C 12 months. Store at -80°C long term.
Note	For research use only.

Data Image



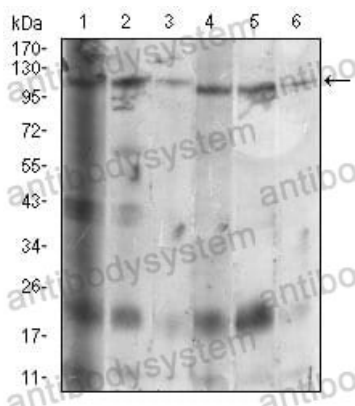
Flow Cytometry

Flow cytometric analysis of A431 cells using SDC1 mouse mAb (green) and negative control (red).



Immunofluorescence

Immunofluorescence analysis of HepG2 cells using SDC1 mouse mAb (green). Blue: DRAQ5 fluorescent DNA dye.



Western blot

Western blot analysis using SDC1 mouse mAb against Hela (1), MCF-7 (2), HepG2 (3), T47D (4), Jurkat (5), NIH/3T3 (6) cell lysate.