

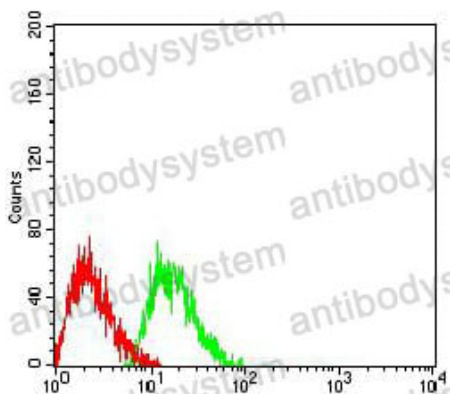
# Anti-CD223/LAG3 Antibody (R3F01)

## Summary

---

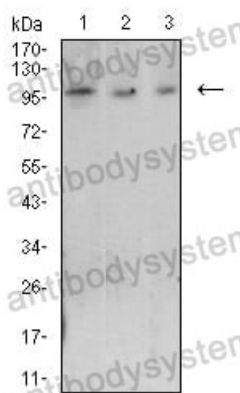
<b>Catalog No.</b>	RHD30403
<b>Clone ID</b>	R3F01
<b>Host species</b>	Mouse
<b>Tested applications</b>	ELISA: 1:10000, FCM: 1:200-1:400, WB: 1:500-1:2000
<b>Species reactivity</b>	Human
<b>Form</b>	Liquid
<b>Storage buffer</b>	0.01M PBS, pH 7.4, 0.05% Sodium Azide.
<b>Concentration</b>	1 mg/ml
<b>Purity</b>	>95% as determined by SDS-PAGE.
<b>Clonality</b>	Monoclonal
<b>Isotype</b>	IgG1
<b>Applications</b>	ELISA, FCM, WB
<b>Target</b>	FDC, LAG3, Lymphocyte activation gene 3 protein, CD223, sLAG-3, LAG-3
<b>Purification</b>	Protein A/G purified from cell culture supernatant.
<b>Endotoxin level</b>	Please contact with the lab for this information.
<b>Accession</b>	P18627
<b>Stability and Storage</b>	Use a manual defrost freezer and avoid repeated freeze-thaw cycles. Store at 4°C short term (1-2 weeks). Store at -20°C 12 months. Store at -80°C long term.
<b>Note</b>	For research use only.

## Data Image



Flow Cytometry

Flow cytometric analysis of Jurkat cells using CD223 mouse mAb (green) and negative control (red).



Western blot

Western blot analysis using CD223 mouse mAb against Raji (1), Ramos (2), and MOLT4 (3) cell lysate.