

Anti-PSMC3 Antibody (R3E92)

Summary

Catalog No.	RHD27502
Clone ID	R3E92
Host species	Mouse
Tested applications	ELISA: 1:10000, FCM: 1:200-1:400, IF: 1:200-1:1000, IHC: 1:200-1:1000, WB: 1:500-1:2000
Species reactivity	Human, Rat, Monkey
Form	Liquid
Storage buffer	0.01M PBS, pH 7.4, 0.05% Sodium Azide.
Concentration	1 mg/ml
Purity	>95% as determined by SDS-PAGE.
Clonality	Monoclonal
Isotype	IgG1
Applications	ELISA, FCM, IF, IHC, WB
Target	26S proteasome AAA-ATPase subunit RPT5, Tat-binding protein 1, Proteasome 26S subunit ATPase 3, Proteasome subunit P50, 26S proteasome regulatory subunit 6A, TBP-1, PSMC3, TBP1
Purification	Protein A/G purified from cell culture supernatant.
Endotoxin level	Please contact with the lab for this information.
Accession	P17980

Stability and Storage

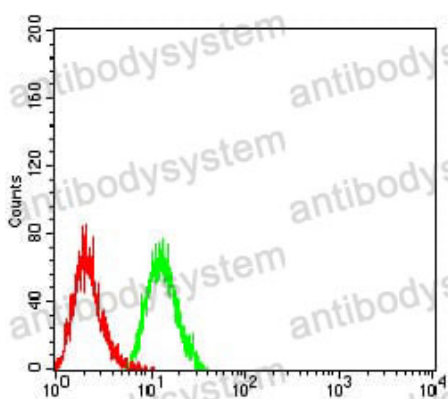
Use a manual defrost freezer and avoid repeated freeze-thaw cycles.

Store at 4°C short term (1-2 weeks). Store at -20°C 12 months. Store at -80°C long term.

Note

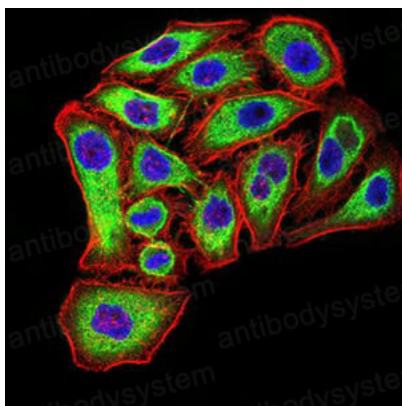
For research use only.

Data Image



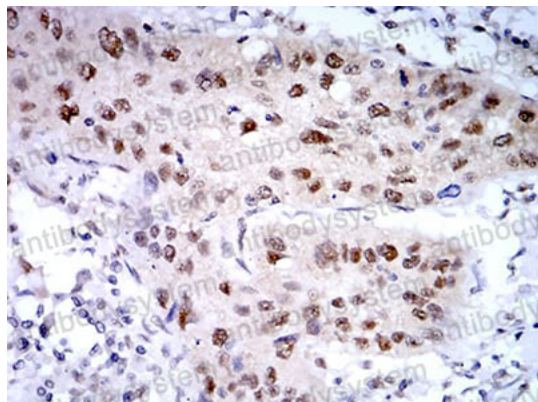
Flow Cytometry

Flow cytometric analysis of Hela cells using PSMC3 mouse mAb (green) and negative control (red).



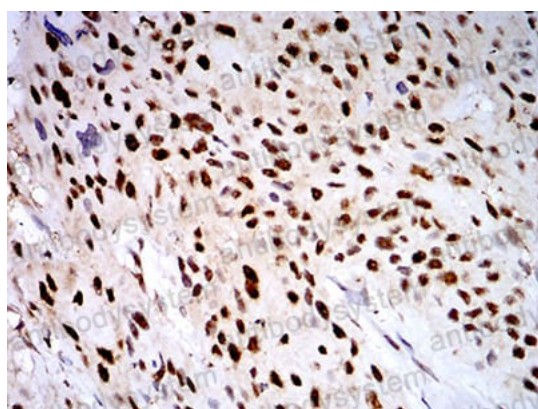
Immunofluorescence

Immunofluorescence analysis of MCF-7 cells using PSMC3 mouse mAb (green). Blue: DRAQ5 fluorescent DNA dye. Red: Actin filaments have been labeled with Alexa Fluor- 555 phalloidin.



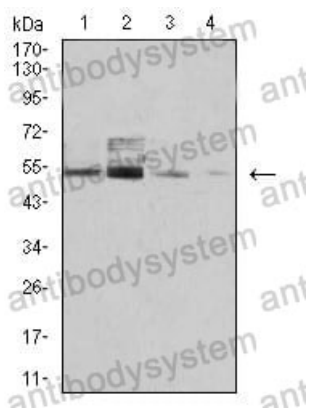
Immunohistochemical

Immunohistochemical analysis of paraffin-embedded human lung cancer tissues using PSMC3 mouse mAb with DAB staining.



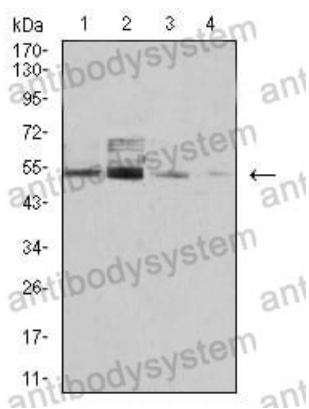
Immunohistochemical

Immunohistochemical analysis of paraffin-embedded human breast cancer tissues using PSMC3 mouse mAb with DAB staining.



Western blot

Western blot analysis using PSMC3 mouse mAb against COS7 (1), C6 (2), Hela (3), and A431 (4) cell lysate.;COS7,C6,Hela,A431



Western blot

Western blot analysis using PSMC3 mouse mAb against COS7 (1), C6 (2), HeLa (3), and A431 (4) cell lysate.;COS7,C6,HeLa,A431