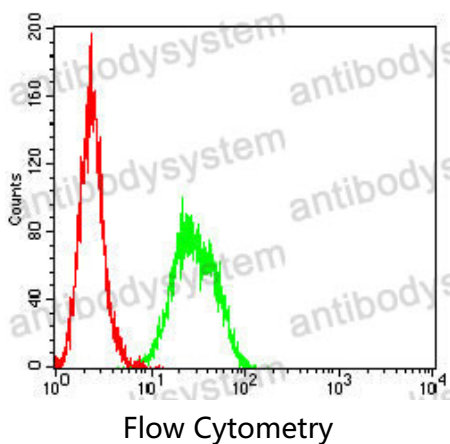


Anti-CD35/CR1 Antibody (R3E84)

Summary

Catalog No.	RHD27005
Clone ID	R3E84
Host species	Mouse
Tested applications	ELISA: 1:10000, FCM: 1:200-1:400
Species reactivity	Human
Form	Liquid
Storage buffer	0.01M PBS, pH 7.4, 0.05% Sodium Azide.
Concentration	1 mg/ml
Purity	>95% as determined by SDS-PAGE.
Clonality	Monoclonal
Isotype	IgG1
Applications	ELISA, FCM
Target	C3BR, Complement receptor type 1, CR1, CD35, C3b/C4b receptor
Purification	Protein A/G purified from cell culture supernatant.
Endotoxin level	Please contact with the lab for this information.
Accession	P17927
Stability and Storage	Use a manual defrost freezer and avoid repeated freeze-thaw cycles. Store at 4°C short term (1-2 weeks). Store at -20°C 12 months. Store at -80°C long term.
Note	For research use only.

Data Image



Flow cytometric analysis of THP-1 cells using CD35 mouse mAb (green) and negative control (red).