

Anti-DDX5 Antibody (R3E83)

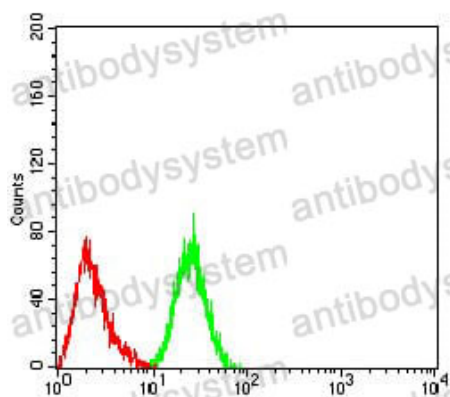
Summary

| | |
|------------------------------|---|
| Catalog No. | RHD26602 |
| Clone ID | R3E83 |
| Host species | Mouse |
| Tested applications | ELISA: 1:10000, FCM: 1:200-1:400, IHC: 1:200-1:1000, WB: 1:500-1:2000 |
| Species reactivity | Human, Mouse, Monkey |
| Form | Liquid |
| Storage buffer | 0.01M PBS, pH 7.4, 0.05% Sodium Azide. |
| Concentration | 1 mg/ml |
| Purity | >95% as determined by SDS-PAGE. |
| Clonality | Monoclonal |
| Isotype | IgG2a |
| Applications | ELISA, FCM, IHC, WB |
| Target | HLR1, Probable ATP-dependent RNA helicase DDX5, RNA helicase p68, G17P1, DDX5, HELR, DEAD box protein 5 |
| Purification | Protein A/G purified from cell culture supernatant. |
| Endotoxin level | Please contact with the lab for this information. |
| Accession | P17844 |
| Stability and Storage | Use a manual defrost freezer and avoid repeated freeze-thaw cycles. Store at 4°C short term (1-2 weeks). Store at -20°C 12 months. Store at -80°C long term. |

Note

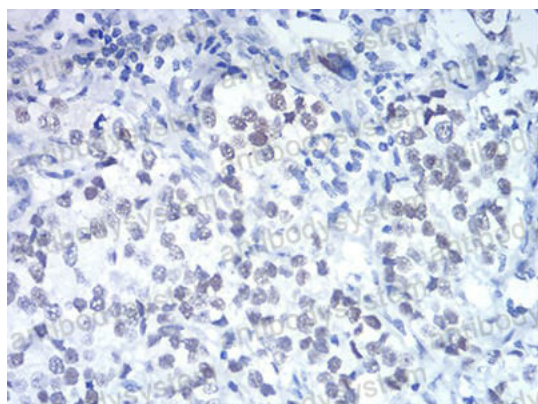
For research use only.

Data Image



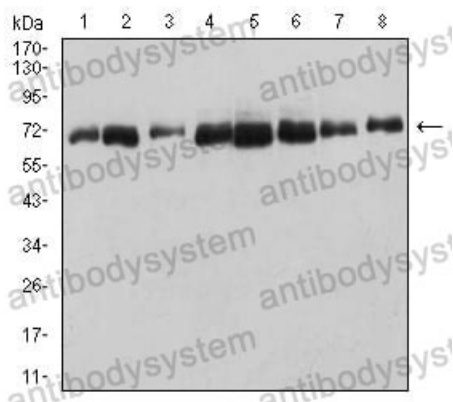
Flow Cytometry

Flow cytometric analysis of Hela cells using DDX5 mouse mAb (green) and negative control (red).



Immunohistochemical

Immunohistochemical analysis of paraffin-embedded human bladder cancer tissues using DDX5 mouse mAb with DAB staining.



Western blot

Western blot analysis using DDX5 mouse mAb against HT-29 (1), HeLa (2), NIH/3T3 (3), COS7 (4), SW620 (5), Jurkat (6), A431 (7), and MCF-7 (8) cell lysate.