

Anti-CEBPB Antibody (R3E74)

Summary

Catalog No.	RHD25601
Clone ID	R3E74
Host species	Mouse
Tested applications	ELISA: 1:10000, FCM: 1:200-1:400
Species reactivity	Human
Form	Liquid
Storage buffer	0.01M PBS, pH 7.4, 0.05% Sodium Azide.
Concentration	1 mg/ml
Purity	>95% as determined by SDS-PAGE.
Clonality	Monoclonal
Isotype	IgG1
Applications	ELISA, FCM
Target	Liver activator protein, Transcription factor 5, LIP, LAP, Liver-enriched inhibitory protein, TCF5, Nuclear factor NF-IL6, C/EBP beta, TCF-5, CCAAT/enhancer-binding protein beta, CEBPB
Purification	Protein A/G purified from cell culture supernatant.
Endotoxin level	Please contact with the lab for this information.
Accession	P17676

Stability and Storage

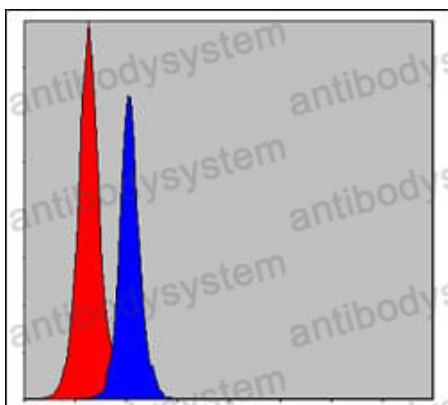
Use a manual defrost freezer and avoid repeated freeze-thaw cycles.

Store at 4°C short term (1-2 weeks). Store at -20°C 12 months. Store at -80°C long term.

Note

For research use only.

Data Image



Flow Cytometry

Flow cytometric analysis of MCF-7 cells using CEBPB mouse mAb (blue) and negative control (red).