

Anti-PLCG2 Antibody (R3E65)

Summary

Catalog No.	RHD19503
Clone ID	R3E65
Host species	Mouse
Tested applications	ELISA: 1:10000, IHC: 1:200-1:1000
Species reactivity	Human
Form	Liquid
Storage buffer	0.01M PBS, pH 7.4, 0.05% Sodium Azide.
Concentration	1 mg/ml
Purity	>95% as determined by SDS-PAGE.
Clonality	Monoclonal
Isotype	IgG1
Applications	ELISA, IHC
Target	PLC-gamma-2, Phosphoinositide phospholipase C-gamma-2, 1-phosphatidylinositol 4,5-bisphosphate phosphodiesterase gamma-2, PLC-IV, Phospholipase C-gamma-2, PLCG2, Phospholipase C-IV
Purification	Protein A/G purified from cell culture supernatant.
Endotoxin level	Please contact with the lab for this information.
Accession	P16885

Stability and Storage

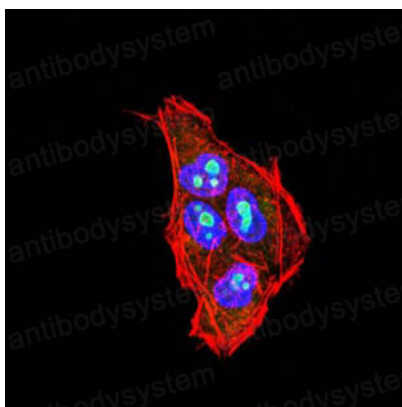
Use a manual defrost freezer and avoid repeated freeze-thaw cycles.

Store at 4°C short term (1-2 weeks). Store at -20°C 12 months. Store at -80°C long term.

Note

For research use only.

Data Image



Immunohistochemical

Immunohistochemical analysis of paraffin-embedded human Hela tissues using PLCG2 mouse mAb with DAB staining.