

Anti-CD36 Antibody (R3E59)

Summary

Catalog No.	RHD19103
Clone ID	R3E59
Host species	Mouse
Tested applications	ELISA: 1:10000, IHC: 1:200-1:1000
Species reactivity	Human
Form	Liquid
Storage buffer	0.01M PBS, pH 7.4, 0.05% Sodium Azide.
Concentration	1 mg/ml
Purity	>95% as determined by SDS-PAGE.
Clonality	Monoclonal
Isotype	IgG1
Applications	ELISA, IHC
Target	CD36, FAT, GPIV, Fatty acid translocase, GP4, PAS IV, Leukocyte differentiation antigen CD36, Platelet collagen receptor, Platelet glycoprotein IV, Thrombospondin receptor, Platelet glycoprotein 4, GP3B, Glycoprotein IIIb, GPIIIB, PAS-4
Purification	Protein A/G purified from cell culture supernatant.
Endotoxin level	Please contact with the lab for this information.
Accession	P16671

Stability and Storage

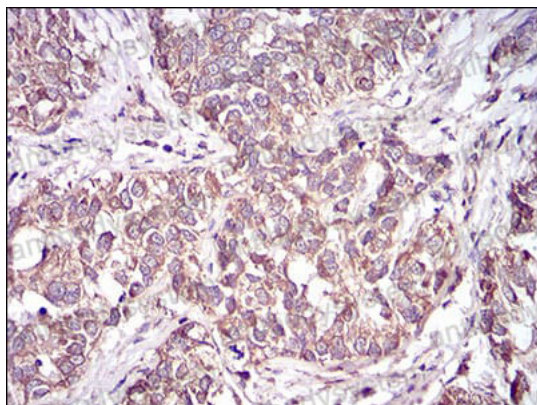
Use a manual defrost freezer and avoid repeated freeze-thaw cycles.

Store at 4°C short term (1-2 weeks). Store at -20°C 12 months. Store at -80°C long term.

Note

For research use only.

Data Image



Immunohistochemical

Immunohistochemical analysis of paraffin-embedded human bladder cancer tissues using CD36 mouse mAb with DAB staining.