

# Anti-FER Antibody (R3E57)

## Summary

---

<b>Catalog No.</b>	RHD18701
<b>Clone ID</b>	R3E57
<b>Host species</b>	Mouse
<b>Tested applications</b>	IF: 1:200-1:1000, IHC: 1:200-1:1000, WB: 1:500-1:2000
<b>Species reactivity</b>	Human, Mouse
<b>Form</b>	Liquid
<b>Storage buffer</b>	0.01M PBS, pH 7.4, 0.05% Sodium Azide.
<b>Concentration</b>	1 mg/ml
<b>Purity</b>	>95% as determined by SDS-PAGE.
<b>Clonality</b>	Monoclonal
<b>Isotype</b>	IgG1
<b>Applications</b>	IF, IHC, WB
<b>Target</b>	Feline encephalitis virus-related kinase FER, p94-Fer, Tyrosine kinase 3, Proto-oncogene c-Fer, FER, Fujinami poultry sarcoma/Feline sarcoma-related protein Fer, TYK3, Tyrosine-protein kinase Fer
<b>Purification</b>	Protein A/G purified from cell culture supernatant.
<b>Endotoxin level</b>	Please contact with the lab for this information.
<b>Accession</b>	P16591

**Stability and Storage**

Use a manual defrost freezer and avoid repeated freeze-thaw cycles.

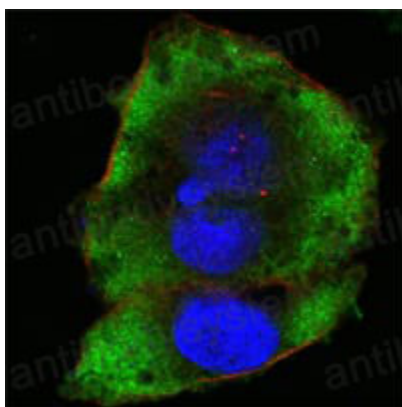
Store at 4°C short term (1-2 weeks). Store at -20°C 12 months. Store at -80°C long term.

**Note**

For research use only.

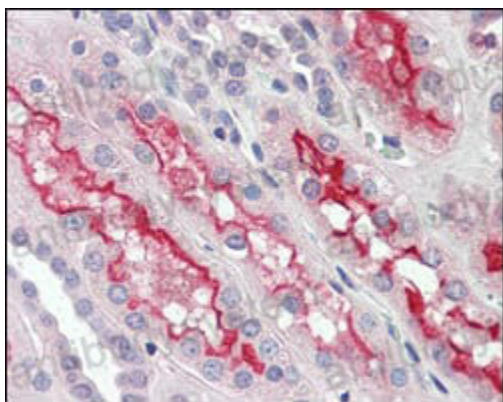
**Data Image**

---



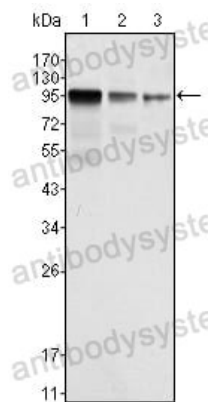
Immunofluorescence

Confocal Immunofluorescence analysis of Hela cells using FER mouse mAb (green). Red: Actin filaments have been labeled with Alexa Fluor-555 phalloidin. Blue: DRAQ5 fluorescent DNA dye.



Immunohistochemical

Immunohistochemical analysis of paraffin-embedded human kidney tissues using FER mouse mAb.



Western blot

Western blot analysis using FER mouse mAb against NIH/3T3 (1), A549 (2) and SK-MEL-5 (3) cell lysate.