

Anti-CD62E/SELE Antibody (R3E55)

Summary

| | |
|----------------------------|--|
| Catalog No. | RHD18602 |
| Clone ID | R3E55 |
| Host species | Mouse |
| Tested applications | ELISA: 1:10000, FCM: 1:200-1:400, IF: 1:200-1:1000 |
| Species reactivity | Human |
| Form | Liquid |
| Storage buffer | 0.01M PBS, pH 7.4, 0.05% Sodium Azide. |
| Concentration | 1 mg/ml |
| Purity | >95% as determined by SDS-PAGE. |
| Clonality | Monoclonal |
| Isotype | IgG2b |
| Applications | ELISA, FCM, IF |
| Target | ELAM-1, CD62E, E-selectin, ELAM1, Leukocyte-endothelial cell adhesion molecule 2, LECAM2, Endothelial leukocyte adhesion molecule 1, CD62 antigen-like family member E, SELE |
| Purification | Protein A/G purified from cell culture supernatant. |
| Endotoxin level | Please contact with the lab for this information. |
| Accession | P16581 |

Stability and Storage

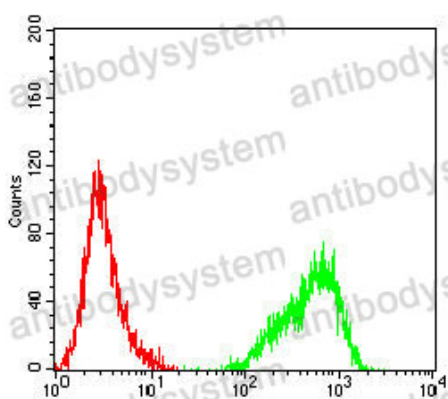
Use a manual defrost freezer and avoid repeated freeze-thaw cycles.

Store at 4°C short term (1-2 weeks). Store at -20°C 12 months. Store at -80°C long term.

Note

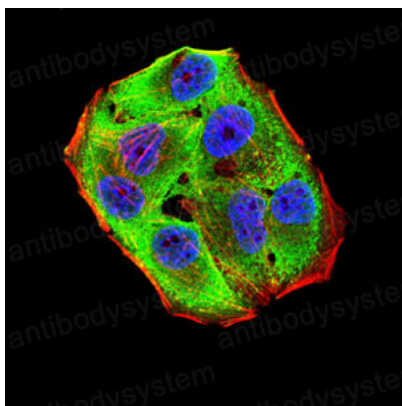
For research use only.

Data Image



Flow Cytometry

Flow cytometric analysis of Jurkat cells using CD62E mouse mAb (green) and negative control (red).



Immunofluorescence

Immunofluorescence analysis of Hela cells using CD62E mouse mAb (green). Blue: DRAQ5 fluorescent DNA dye. Red: Actin filaments have been labeled with Alexa Fluor- 555 phalloidin.