

Anti-CD326/EPCAM Antibody (R3E51)

Summary

Catalog No.	RHD17408
Clone ID	R3E51
Host species	Mouse
Tested applications	ELISA: 1:10000, FCM: 1:200-1:400, IHC: 1:200-1:1000, WB: 1:500-1:2000
Species reactivity	Human, Mouse, Rat, Monkey
Form	Liquid
Storage buffer	0.01M PBS, pH 7.4, 0.05% Sodium Azide.
Concentration	1 mg/ml
Purity	>95% as determined by SDS-PAGE.
Clonality	Monoclonal
Isotype	IgG2a
Applications	ELISA, FCM, IHC, WB
Target	Epithelial glycoprotein 314, hEGP314, Major gastrointestinal tumor-associated protein GA733-2, EGP314, TACSTD1, Adenocarcinoma-associated antigen, TROP1, EPCAM, Epithelial glycoprotein, KS 1/4 antigen, Tumor-associated calcium signal transducer 1, M4S1, CD326, Ep-CAM, EGP, Epithelial cell adhesion molecule, M1S2, KSA, Cell surface glycoprotein Trop-1, GA733-2, Epithelial cell surface antigen, MIC18
Purification	Protein A/G purified from cell culture supernatant.
Endotoxin level	Please contact with the lab for this information.
Accession	P16422

Stability and Storage

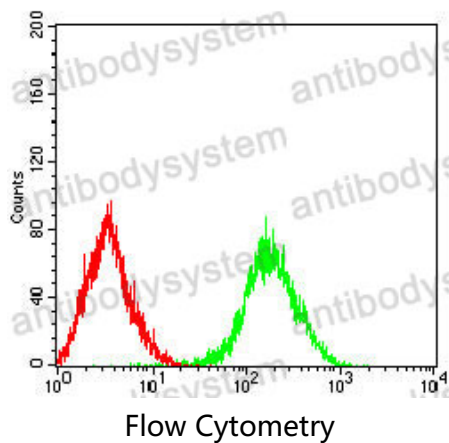
Use a manual defrost freezer and avoid repeated freeze-thaw cycles.

Store at 4°C short term (1-2 weeks). Store at -20°C 12 months. Store at -80°C long term.

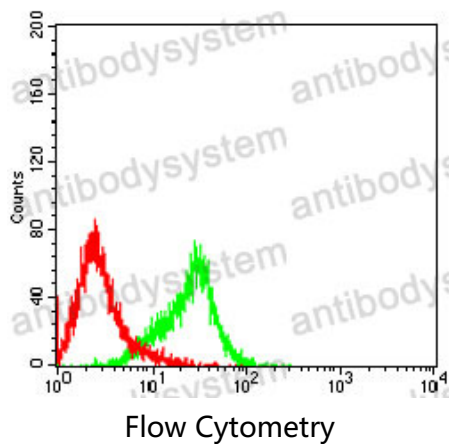
Note

For research use only.

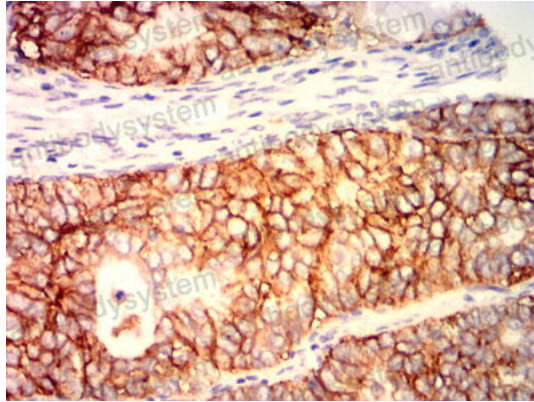
Data Image



Flow cytometric analysis of Lovo cells using EPCAM mouse mAb (green) and negative control (red).

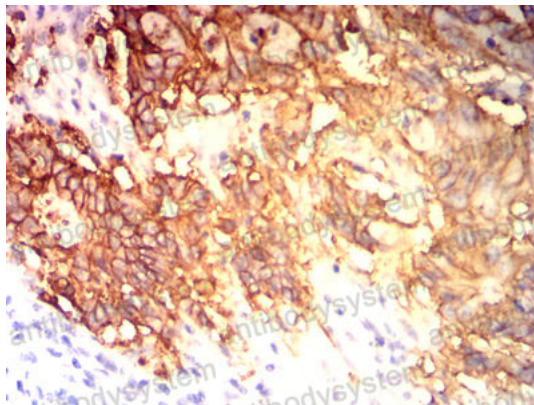


Flow cytometric analysis of COS7 cells using EPCAM mouse mAb (green) and negative control (red).



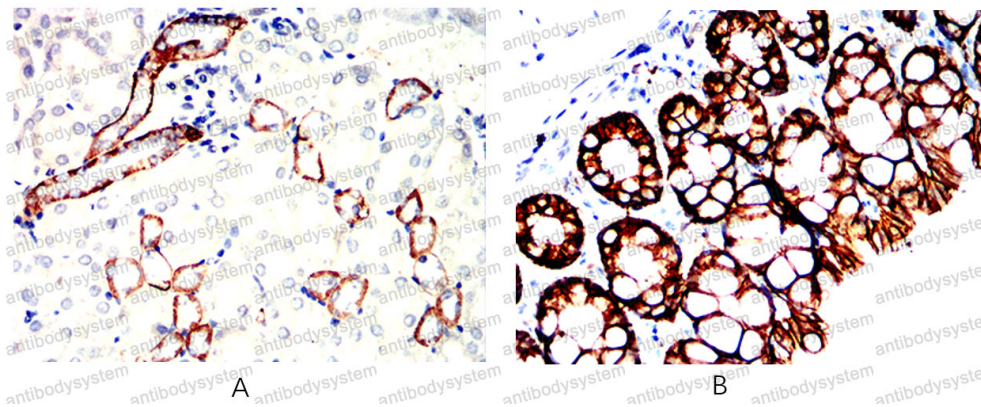
Immunohistochemical

Immunohistochemical analysis of paraffin-embedded human cervical cancer tissues using EPCAM mouse mAb with DAB staining.



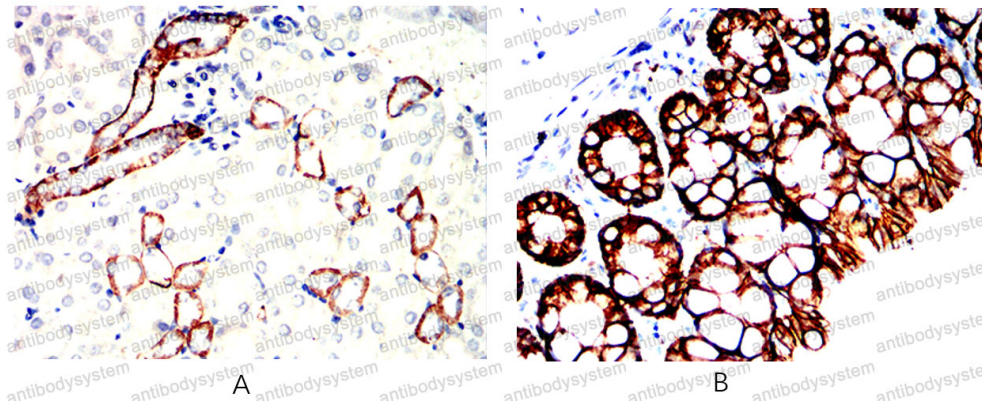
Immunohistochemical

Immunohistochemical analysis of paraffin-embedded human colon cancer tissues using EPCAM mouse mAb with DAB staining.



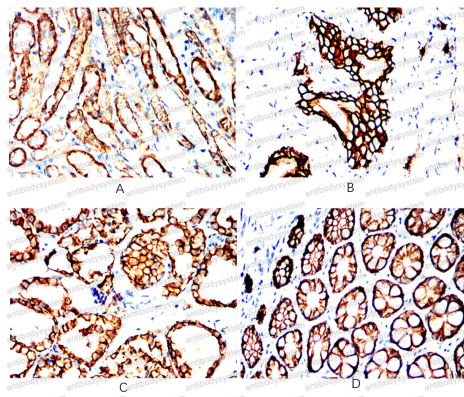
Immunohistochemical

Immunohistochemical analysis of paraffin-embedded Mouse kidney(A) and Mouse colon(B) using EPCAM mouse mAb with DAB staining.



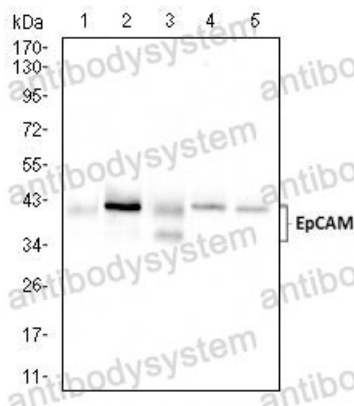
Immunohistochemical analysis of paraffin-embedded Mouse kidney(A) Mouse colon(B) using EPCAM mouse mAb with DAB staining.

Immunohistochemical



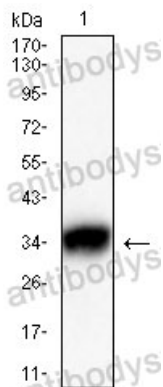
Immunohistochemical analysis of paraffin-embedded Rat kidney(A) Rat bladder(B) Rat thyroid(C) Rat colon(D) using EPCAM mouse mAb with DAB staining.

Immunohistochemical



Western blot

Western blot analysis using EPCAM mouse mAb against HCT116 (1), HT-29 (2), SW480 (3), Sw-620 (4), and T47D (5) cell lysate.



Western blot

Western blot analysis using
EPCAM mouse mAb against PC-
12 cell lysate.