

Anti-CD326/EPCAM Antibody (R3E48)

Summary

Catalog No.	RHD17405
Clone ID	R3E48
Host species	Mouse
Tested applications	ELISA: 1:10000, FCM: 1:200-1:400, IHC: 1:200-1:1000, WB: 1:500-1:2000
Species reactivity	Human, Mouse, Rat
Form	Liquid
Storage buffer	0.01M PBS, pH 7.4, 0.05% Sodium Azide.
Concentration	1 mg/ml
Purity	>95% as determined by SDS-PAGE.
Clonality	Monoclonal
Isotype	IgG1
Applications	ELISA, FCM, IHC, WB
Target	Epithelial glycoprotein 314, hEGP314, Major gastrointestinal tumor-associated protein GA733-2, EGP314, TACSTD1, Adenocarcinoma-associated antigen, TROP1, EPCAM, Epithelial glycoprotein, KS 1/4 antigen, Tumor-associated calcium signal transducer 1, M4S1, CD326, Ep-CAM, EGP, Epithelial cell adhesion molecule, M1S2, KSA, Cell surface glycoprotein Trop-1, GA733-2, Epithelial cell surface antigen, MIC18
Purification	Protein A/G purified from cell culture supernatant.
Endotoxin level	Please contact with the lab for this information.
Accession	P16422

Stability and Storage

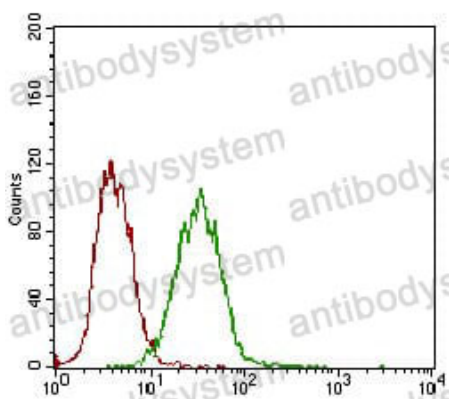
Use a manual defrost freezer and avoid repeated freeze-thaw cycles.

Store at 4°C short term (1-2 weeks). Store at -20°C 12 months. Store at -80°C long term.

Note

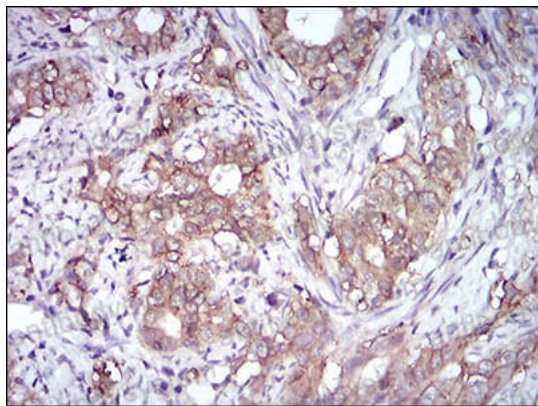
For research use only.

Data Image



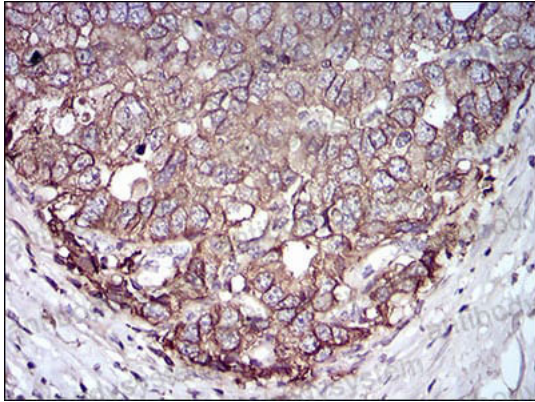
Flow Cytometry

Flow cytometric analysis of A431 cells using EPCAM mouse mAb (green) and negative control (red).



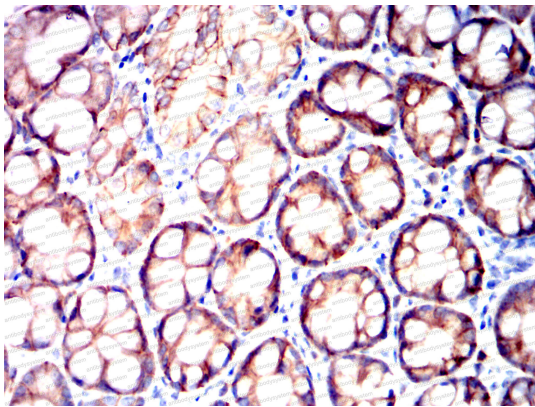
Immunohistochemical

Immunohistochemical analysis of paraffin-embedded human cervical cancer tissues using EPCAM mouse mAb with DAB staining.



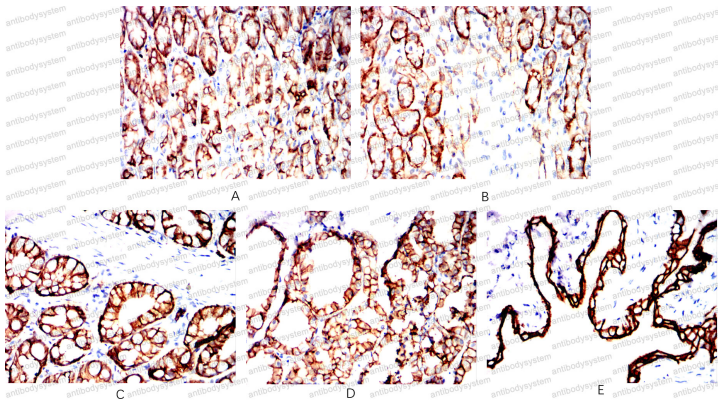
Immunohistochemical

Immunohistochemical analysis of paraffin-embedded human esophageal cancer tissues using EPCAM mouse mAb with DAB staining.



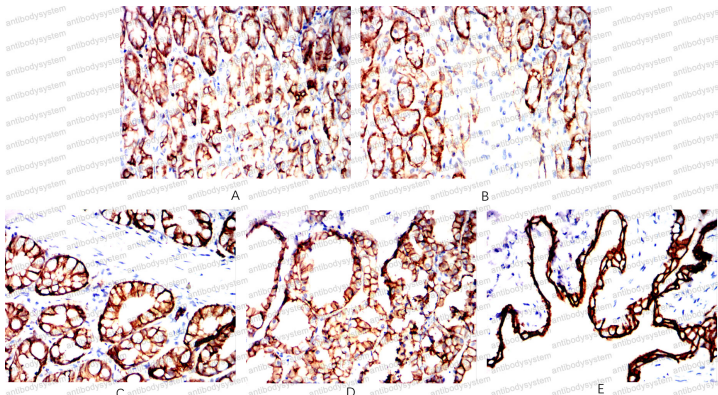
Immunohistochemical

Immunohistochemical analysis of paraffin-embedded Mouse colon using EPCAM mouse mAb with DAB staining.



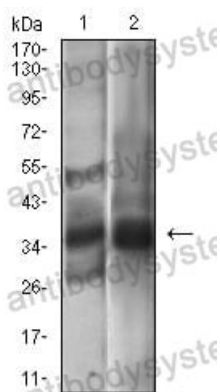
Immunohistochemical

Immunohistochemical analysis of paraffin-embedded Rat stomach(A)Rat kidney(B)Rat colon(C)Rat thyroid(D)Rat bladder(E) using EPCAM mouse mAb with DAB staining.



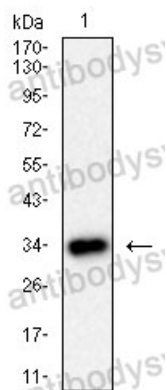
Immunohistochemical analysis of paraffin-embedded Rat stomach(A) Rat kidney(B) Rat colon(C) Rat thyroid(D) Rat bladder(E) using EPCAM mouse mAb with DAB staining.

Immunohistochemical



Western blot analysis using EPCAM mouse mAb against A431 (1), MCF-7 (2) cell lysate.

Western blot



Western blot analysis using EPCAM mouse mAb against PC-12 cell lysate.

Western blot